



Residential & Light Commercial Fans

General & Bathroom Ventilation, Range Hood Exhaust & Clothes Dryer Boosting



S&P in the World

At present, S&P is a company that is established and recognized all over the world with its own subsidiaries in Spain, Portugal, France, Great Britain, Holland, Belgium, Germany, Italy, Latvia, Austria, Mexico, the United States, Canada, Romania and Australia; with a network of exclusive, independent distributors in most of the countries of the rest of the world, and an expansive project to continue its growth in the Asian market.



- Subsidiaries
- Distributors
- Factories



Ripoll Factory (Spain)



Factory in USA



Mexico Factory



Logistics Center in Parets (Spain)



Factory in UK



Factory in France

S&P: A Global Strategy - A Local Policy

S&P was founded in the locality of Ripoll (Spain) in 1951 by the engineers Eduard Soler and Josep Palau. From the beginning they had the clear vision that the future would depend on the expansion abroad, at first towards Europe, then to continue in the rest of the world markets.



philosophy

The principle philosophy on which S&P was based on and continues to base its projects are:

Own technology: Key to any S&P projects, the concept has to be strong and consolidated over time. It is necessary that it is based on creativity and innovation to provide products, that offer benefits to the market. S&P has registered, throughout its history, over 140 patents, on more than 20 industrial models and some 120 on utility models.

Internationalization and Growth: It was clear that the guarantee of the future of the company was to open up to the world and to enter into new markets with high levels of competitiveness. This requires both a constant improvement of the existing products and development of new innovative designs. At present S&P is a world leader in ventilation, with production centers in Europe, America and Asia. A powerful distribution structure, through subsidiaries and exclusive distributors, allows S&P to be present in all the world markets, giving coverage and excellent service.

Self-financing: One of the strengths of S&P has been the constant growth and the policy of reinvestment of profits in a continuous technology improvement in the field of research & development, production and commercialization. This has allowed S&P to be a self-financed company with total independence in the decision making.



basic pillars

On the philosophical principles of the project of S&P, there are some basic pillars on which the company is sustained:

Personal development: At S&P we promote the human factor encouraging teamwork, the contribution of ideas, internal promotion and training. We encourage the delegation of responsibilities, giving confidence and full respect of the individual with the aim of ensuring that people feel part of a common project and are reflected by the Company's values.

Excellence in the management: Factors we consider fundamental are dedication, honesty, self demand, and determination to do all things well, to achieve the levels of quality and service required by our customers.

Research: In the R+D+I department, more than 60 engineers and technicians, equipped with the most modern design systems, work to obtain products with the best features. Sophisticated software allows the simulation of the behavior of the equipment already in the process of design. The goal is clear: A commitment to our customers to achieve the quality levels they expect from us.

Product: Today the S&P catalog offers a range of ventilation products, both commercial and residential, with solutions for every need. With constant development work to ensure our customers and end users, not only the choice of the best model, but also the required design for ease of installation, and a full guarantee.

Quality: At S&P the contribution to the final quality begins in the design of the products. From that point on, quality remains at the center of the development throughout the company, finishing in the after-sales service. For this reason, our company is recognized all over the world for its high level of reliability of all the products offered in our catalog.

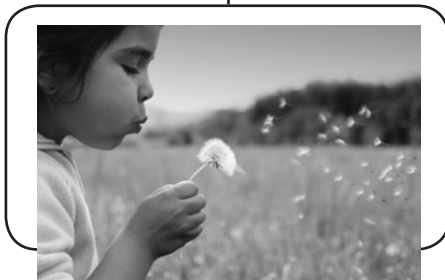


Customer service: In a market as competitive as the current one it is simply not enough to produce excellent quality. A company should offer products and a wide range of services for its customers and consultants. At S&P this principle is very clear. Thus, our customers know that they have at disposal:

- Salesmen with high technical skills
- Technical Support Service and a software designed by S&P to help professionals to choose the most suitable product for every case and a complete website on which S&P, besides showing its catalog, puts much of the knowledge accumulated throughout more than 60 years of experience of the company at the professional's disposal.

The screenshot displays the S&P website interface. At the top, the 'Optisizer' logo is prominent, followed by 'Soler&Palau Ventilation Group' and the 'JenCo Fan' logo. Below this is a navigation bar with 'Home', 'Products', 'Company', 'Distributors', 'JencoFan Reps', and 'Contact'. The main content area is titled 'Product Range' and features a grid of product categories: Inline Fans, Tube Axial Fans, Roof Top Fans, Ceiling and Cabinet Fans, Gravity Vents, Vent Sets, Wall Fans, Spin Aromatic Roof Top, and Inline Duct Blowers. A 'Accessories' category is also listed. A sidebar on the right contains sections for 'Features' and 'Applications'. At the bottom, there is a footer with '© Copyright 2010-2011 Soler & Palau Canada'.

Respect for the environment: A policy that was not respectful with the environment would be incompatible with the S&P philosophy. Our actions today implicate us deeply in the legacy that we are going to leave our children.



QUICK SELECTION & WARRANTY GUIDE

Use this guide to find the S&P fans best suited for your application. The color coded guide helps you easily find the section within this catalog.

Model	Mounting Location					Airflow		Application							Drives			Impeller Type		Warranty		
	Roof Curb	Floor/Base	Hanging	Wall	Ceiling	Exhaust	Supply	General/Clean Air	Contaminated Air	Spark Resistant	Grease/Restaurant (UL762)	Smoke Control (UL)	High Wind Load (Certified)	High Temp above 200° F	Energy Recovery	Belt	Direct	Centrifugal	Propeller	Mixed Flow	Fan (years)	Motor (years)
Residential/Light Commercial																						
TD					X	X	X	X	X								X		X	X	5	-
TD-SILENT					X	X	X	X	X								X		X	X	5	-
PV					X	X	X	X	X								X	X			5	-
SWF				X		X	X	X	X								X	X			5	-
FF/FFC			X		X	X		X									X	X			1	1
PC			X		X			X									X	X			5	-

See Warranty Statement on Page 6





Limited Warranty

Soler & Palau Canada 5600 Ambler Rd. Mississauga ON, warrants equipment of its manufacture to be free from defects in design, materials and workmanship (exclusive of abrasion, corrosion or erosion) for one (1) , two (2) or five (5) year(s) as noted from the date of shipment to the original purchaser or the date of notification of readiness to ship. Motor warranty is one (1) or three (3) year(s) as noted. In order to claim the benefit of this warranty, buyer must notify manufacturer in writing of the claimed defect within ten (10) days after discovering it and return this equipment or parts to the manufacturer with transportation prepaid. In the event of on-site repair, no service technician will be dispatched until manufacturer receives your written purchase order. If any of the following conditions exist, the warranty will be null and void: (1) Buyer has permitted other persons not approved or authorized by manufacturer to alter, adjust, replace or repair the equipment or any part thereof. (2) Buyer has not followed instructions or other directions given in the contract documents or our maintenance manual. (3) When breakage or other loss or damage is the result of any negligence, misuse or fault on the part of any operator or other person not under our supervision or control. (4) The defect is the result of designs or drawings made, furnished or specified by others. (5) In the case of goods not manufactured but supplied by the manufacturer as part of a contract, manufacturer shall only be liable to the same extent that our supplier is to manufacturer, not to exceed any liability manufacturer would have for warranty on our own equipment. (6) Buyer has not paid in full invoices submitted to the buyer which are due for payment. (7) Unusual wear and tear of the equipment.

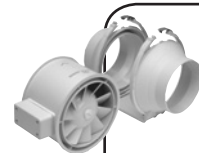
Statements relating to the product, its use or installation made prior to the execution of the agreement, are not warranties except to the extent that the contrary is expressly set forth herein. It is understood that such statements were not intended to, and did not, form a part of the agreement; they were merely made in the course of negotiations of the parties.

THIS WARRANTY IS IN LIEU OF ANY OTHER EXPRESSED OF IMPLIED WARRANTIES, INCLUDING ANY IMPLIED WARRANTY OF MERCHANTABILITY OR FITNESS FOR ANY PARTICULAR PURPOSE. OUR SOLE AND EXCLUSIVE OBLIGATION UNDER THIS WARRANTY IS TO REPAIR OR REPLACE DEFECTIVE EQUIPMENT OR PARTS OR, AT OUR OPTION, TO PAY THE REASONABLE COST OF REPAIR OR REPLACEMENT. BUYER AGREES THAT NO OTHER REMEDY (INCLUDING, BUT NOT LIMITED TO, INCIDENTAL OR CONSEQUENTIAL DAMAGES, DAMAGE FOR LOST PROFITS OR SALES, OR DAMAGES FOR INJURIES TO PERSON OR PROPERTY) SHALL BE AVAILABLE. NOTWITHSTANDING THE ABOVE, THE TOTAL AMOUNT THAT MAY IN ANY EVENT BE PAYABLE IN SETTLEMENT OR LIABILITY, HOWEVER INCURRED, SHALL NOT EXCEED THE CONTRACT PRICE.

Residential/Light Commercial Product Range Index

TD-MIXVENT

10



TD-SILENT

14



PV-POWERVENT

19



SWF-SIDEWALL

23



INLINE FAN ACCESSORIES

26



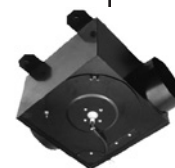
DRYER BOOSTER KITS

29



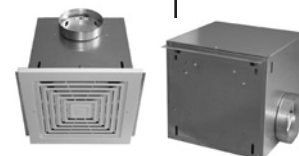
MODEL DBB

30



MODELS FF & FFC

31



MODELS PC

42





MODEL TD-MIXVENT

INLINE MIXED FLOW DUCT FAN

MODEL FEATURES

- Exhaust air up to 2,630 CFM with static pressure capabilities to 1" w.g.
- Mixed flow impeller for excellent air flow to pressure performance ratio
- Direct connection, two-speed motor
- Ideal for applications where space is limited
- AMCA Seal for Air Performance
- cULus Listed

MODEL OVERVIEW

The TD-MIXVENT series of in-line duct fans have been specially designed to maximize the airflow performance with minimal noise levels within the smallest and most compact of housing sizes. This makes the TD-MIXVENT series the ultimate solution for small to medium sized ventilation installations which require a high airflow to pressure ratio and occupy only the minimum space possible. Example: false ceiling voids, cabinets and many other limited space environments.

All the models in the TD-MIXVENT range have been designed with the professional contractor/engineer in mind. All models include a "removable body" feature that enables the motor-impeller assembly to be completely removed or replaced without the need to interfere with the attached ducting.

All models within the TD-MIXVENT range incorporate a powerful mixed flow impeller and internal air vanes located at the discharge end of the fan housing. This impeller and guide vane combination provides a smooth laminar air flow which in turn minimizes turbulence and noise, and generates an **excellent air flow to pressure performance ratio**.

All of the TD-fans include the combination of a powerful motor, factory installed, to a mixed flow impeller. This motor and impeller combination enables the TD-fans to deliver high airflow performances with minimum noise generation against high static pressures typically found in ducted ventilation systems. The unique design of the support brackets, allows the motor and impeller assembly to be fitted or removed without dismantling the adjacent ducting and therefore, facilitating any installation or maintenance. The internal aerodynamic design of the TD-MIXVENT fan enables the unit to generate large air volumes and pressures with the minimum of in-duct or radiated noise. As an additional standard advantage, TD-MIXVENT fans are fitted with a direct connection two-speed motor. The TD-fans offer the ideal in-line duct fan solution for a wide range of HVAC ventilation applications.

TD-MIXVENT Fan Kits

The TD ventilation kits enable the simple and fast installation of a complete ventilation system. The kits include the powerful TD in-line fan providing efficient extraction for bathrooms, toilets, washrooms and any other applications that require the removal of bad odors, stuffy and humid air. In addition to the fan, the kits include an interior premium intake grille (PG) and an exterior louvered grille (PERW) to provide the complete hardware required for a given ventilation system.



5 year fan housing and motor warranty

All specifications are subject to change without notice unless approved in submittal by S&P.

CONSTRUCTION/SPECIFICATION CHECKLIST

Construction

The TD-MIXVENT models 100, 100x, 125, 150, 200 and 200x are manufactured in tough reinforced plastic, models 250, 315, 355 and 400 have a metal casing and are finished in a tough epoxy-polyester paint coating.

The TD fan duct connection flanges are manufactured from reinforced plastic, except for models 200, 200x, 250, 315, 355 and 400 which are constructed from epoxy-polyester coated metal.

TD 250 and 315 are UL listed for outdoor use.

Impellers

The impeller blades for models 100, 100x, 125 and 150 are molded in tough ABS plastic. Models 200, 200x, 250, 315, 355 and 400 are metal.

Motors

Models 100, 100x and 125:

Single-phase, 120V 60Hz, shaded pole induction asynchronous motor in die cast aluminum. All motors include direct two speed connection and are also suitable for voltage speed control.

- Class II electrical insulation (model 100) & Class I (models 100x and 125)
- IP 44 Protection
- Class B Motor Insulation
- Safety auto reset Thermal Overload Protection (fuse type)
- Self-lubricating sleeve bearings.
- Suitable for working airstreams up to 104° F (40°C).

Models 150, 200, 200x, 250, 315, 355 and 400:

Single-phase induction asynchronous motor, with permanent capacitor and external rotor in die cast aluminum. Models 150, 200, 200x and 315 include direct two speed connection and are also suitable for voltage speed control. Models 355 and 400 are single speed.

- Suitable for working airstreams up to 140° F (60°C).
- Class I electrical insulation
- IP 44 Protection
- Thermal Overload Protection
- Class B Motor Insulation
- Sealed For Life, ball bearings

ACCESSORIES



PG
Premium Intake
Grille



BOC/BOR
Interior Air
Valve



MCA
Backdraft
Shutter



MBR
Connector



MAR
Rectangular Duct
Adapter



MRJ
Grille

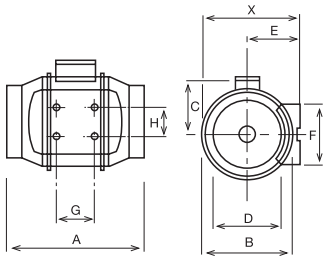


CVC
Continuous
Ventilation Controls



PERFORMANCE/DIMENSIONS

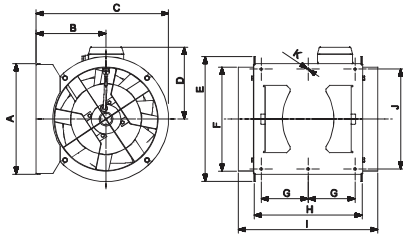
Models 100 - 315



Dimensions (inches/mm)

Model	X	A	B	C	D	E	F	G	H
TD-100	5 15/16 151	9 1/8 232	5 7/16 138	3 3/4 96	3 7/8 98	3 1/4 82	3 3/4 95	1 7/8 48	2 1/16 52
TD-100x	7 3/8 188	11 15/16 303	6 15/16 176	4 1/2 115	3 13/16 97	3 15/16 100	3 9/16 90	3 1/8 80	2 3/8 60
TD-125	7 3/8 188	10 3/16 258	6 15/16 176	4 1/2 115	4 13/16 123	3 15/16 100	3 9/16 90	3 1/8 80	2 3/8 60
TD-150	8 3/8 212	11 5/8 295	7 7/8 200	5 127	5 13/16 147	4 7/16 112	5 1/8 130	3 1/8 80	2 3/8 60
TD-200/ TD-200x	9 3/16 233	11 7/8 302	8 9/16 217	5 9/16 141	7 13/16 198	4 7/8 124	5 1/2 140	3 15/16 100	3 11/16 94
TD-250	11 7/16 291	15 3/16 386	10 11/16 272	7 9/16 192	9 3/4 248	6 1/8 155	6 5/8 168	5 11/16 145	5 1/2 140
TD-315	14 356	17 11/16 450	13 1/4 336	8 13/16 224	12 5/16 312	7 3/8 188	8 1/4 210	7 3/16 182	7 178

Models 355 & 400



Model	A	B	C	D	E	F	G	H	I	J	K
TD-355	14 5/6 377	9 3/8 238	17 11/16 451	8 5/6 224	16 7/9 426	13 13/9 354	5 8/9 150	14 1/2 368	18 2/3 474	13 3/8 340	1/3 8.5
TD-400	1/6 407	9 4/5 249	19 3/8 492	10 1/2 267	19 1/6 487	15 5/7 399	6 2/7 160	16 3/4 425	21 5/9 547	14 4/7 370	1/3 8.5

Performance characteristics

All models include a direct two speed motor connection.

Model	Nom. RPM	Volts	Max. Watts	Speed	CFM v Static Pressure (SP) Ins. WG							Max. SP	Max operating temp. (°F)	Wgt. (lbs)	Duct Dia. Ins.
					0"	0.125"	0.25"	0.375"	0.5"	0.75"	1.0"				
TD-100	2431	120	23	LS	97	81	51	-	-	-	-	.4	104	2	4"
	2516	120	26	HS	101	85	57	-	-	-	-	.4	104	2	4"
TD-100x	1556	120	20	LS	100	77	48	-	-	-	-	.375	104	4.4	4"
	2096	120	33	HS	135	113	90	53	-	-	-	.55	104	4.4	4"
TD-125	1633	120	24	LS	149	110	73	-	-	-	-	.35	104	4.4	5"
	2146	120	38	HS	197	168	133	86	22	-	-	.55	104	4.4	5"
TD-150	1709	120	54	LS	218	193	163	128	105	24	-	.8	140	4.4	6"
	2289	120	65	HS	293	273	250	227	206	131	35	1.15	140	4.4	6"
TD-200	2322	120	139	LS	476	422	373	317	260	40	-	1.38	140	8.8	8"
	2781	120	184	HS	538	495	458	418	367	190	10	1.625	140	8.8	8"
TD-200x	1935	120	122	LS	419	393	363	327	295	215	107	1.04	140	8.8	8"
	2467	120	169	HS	478	457	432	402	372	285	192	1.75	140	8.8	8"
TD-250	2400	115	162	LS	541	475	418	355	295	218	170	2.03	140	19.8	10"
	3200	115	241	HS	754	715	680	640	606	520	405	2.53	140	19.8	10"
TD-315	2000	115	208	LS	751	670	545	420	285	190	130	1.62	140	30.9	12.4"
	2500	115	335	HS	1050	990	932	850	770	600	420	2.95	140	30.9	12.4"
TD-355	1400	115	464	-	1829	1740	1620	1530	1450	1190	-	1.1	140	43	14"
TD-400	1400	115	756	-	2630	2490	2360	2240	2100	1750	350	1.2	140	78	16"

Performance certified is for installation Type D: Ducted Inlet, Ducted Outlet. Performance ratings do not include the effects of appurtenances.

LS= Low Speed
 HS = High Speed



S&P, Div. of Soler & Palau Ventilation Group, certifies that the TD range shown herein is licensed to bear the AMCA Seal. The ratings shown are based on tests and procedures performed in accordance with AMCA Publication 211 and comply with the requirements of the AMCA Certified Ratings Program.



TD 250 & 315 are UL listed for outdoor use.

Sound characteristics

Fan sound levels are measured in sones. At this time there are no sone level test standards available through HVI due to the fact that remote mounted fan noise levels are in proportion to the following: type of duct, length of duct, fan distance from the intake source and other miscellaneous factors. However, it is generally accepted that remote mounted venting is usually quieter than standard (in room) venting.



MODEL TD-MIXVENT
INLINE MIXED FLOW DUCT FAN



KIT - TD BATHROOM EXHAUST KITS

FEATURING TD-MIXVENT FANS



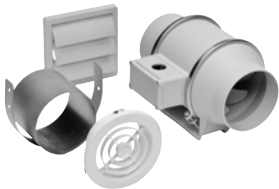
The TD-MIXVENT fan kits provide all the hardware needed to complete a simple in-line ducted ventilation installation. The kit includes a powerful TD in-line fan and exterior and interior grilles (with or without lights). Available in both Standard Exhaust Kits, for venting a single location, and Deluxe Exhaust Kits, for venting multiple locations with one fan.

The TD-MIXVENT fan kit is the ideal solution for any simple in-line ducted fan installation.

All TD kits have standard 7-year warranty*



Standard Exhaust Kits - Single Vent



KIT-TD100

- 1 TD100 exhaust fan
- 1 plastic round grille (PG-100)
- 1 exterior louvered grille (PER-100W)
- Integral mounting bracket

KIT-TD100x

- 1 TD100x exhaust fan
- 1 plastic round grille (PG-100)
- 1 exterior louvered grille (PER-100W)
- Integral mounting bracket

KIT-TD150

- 1 TD150 exhaust fan
- 1 plastic round grille (PG-150)
- 1 exterior louvered grille (PER-150W)
- Integral mounting bracket

Deluxe Exhaust Kits - Dual Vent



KIT-TD150-DV

- 1 TD150 exhaust fan
- 2 plastic round grilles (PG-150)
- 1 exterior louvered grille (PER-150W)
- 1 Y-fitting (SY-6)
- Integral mounting bracket

IMPORTANT: If venting in a non-insulated attic space, or in a cold climate, insulated flexible duct is strongly recommended for condensation issues.

*Bulbs in Lighted Kits not included in warranty



KIT-TD100XL

- 1 TD100x exhaust fan
- 1 Vent Light with LED Bulb (VLED-100)
- Integral mounting bracket

KIT-TD100XH

- 1 TD100x exhaust fan
- 1 Vent Light with Halogen Bulb (VLH-100)
- Integral mounting bracket

KIT-TD100XF

- 1 TD100x exhaust fan
- 1 Vent Light with Fluorescent Bulb (VLF-100)
- Integral mounting bracket

Lighted Deluxe Exhaust Kits - Dual Vent



KIT-TD150L

- 1 TD150 exhaust fan
- 2 Vent Lights with LED Bulb (VLED-100)
- 1 Y-fitting (SY44-6)
- Integral mounting bracket

KIT-TD150H

- 1 TD150 exhaust fan
- 2 Vent Lights with Halogen Bulb (VLH-100)
- 1 Y-fitting (SY44-6)
- Integral mounting bracket

KIT-TD150F

- 1 TD150 exhaust fan
- 2 Vent Lights with Fluorescent Bulb (VLF-100)
- 1 Y-fitting (SY44-6)
- Integral mounting bracket

S&P
Exclusive
Product

MODEL TD-SILENT

EXTREMELY QUIET INLINE MIXED FLOW DUCT FAN

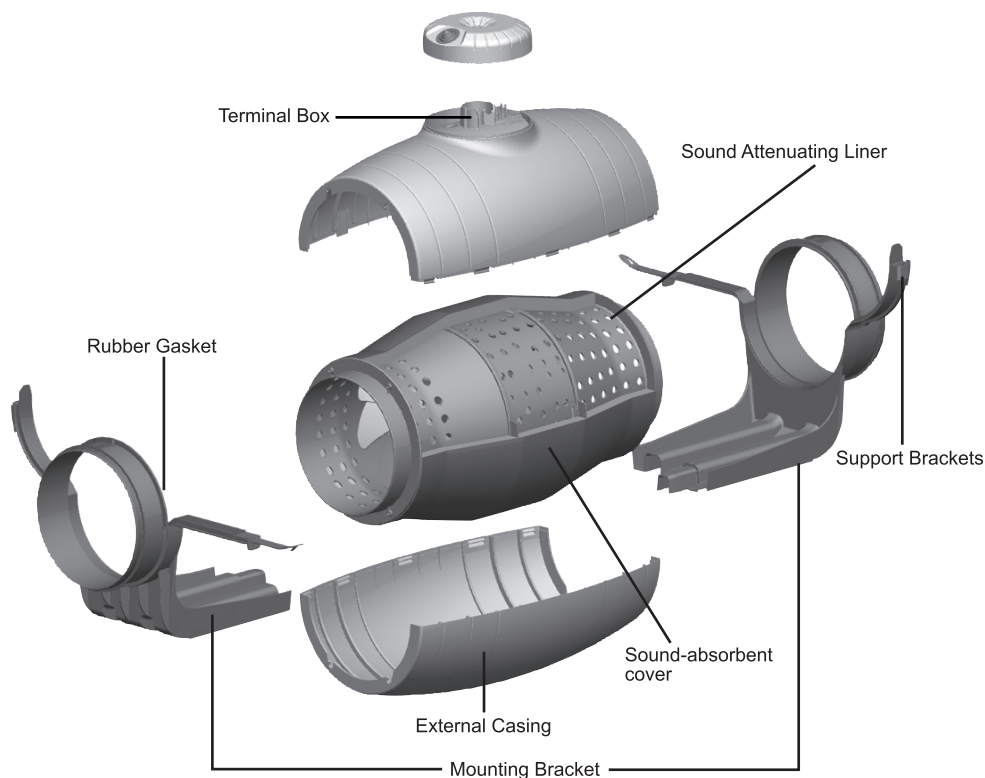
MODEL FEATURES

- Exhaust air up to 530 CFM with static pressure capabilities to 1" w.g.
- Mixed flow impeller for excellent air flow to pressure performance ratio
- Direct connection, two-speed motor
- Ideal for applications where space is limited
- cULus Listed

MODEL OVERVIEW

The TD-SILENT fans as the name suggests, are extremely quiet, low profile "Mixed-flow" fans. Manufactured in plastic material with an external connection box, the body is easily dismantled with a two speed controllable 115V 60Hz motor. Sound waves are directed through the perforated inner skin and absorbed by a layer of sound-absorbent insulation. Plus the TD-SILENT is fitted with rubber gaskets on the inlet and outlet to facilitate installation, absorb vibrations, and provide a virtually air-tight seal.

The TD-SILENTs offer the same simple installation features as the extremely popular TD-MIXVENT fans with an integral mounting bracket, removable body, and a terminal box that can be rotated 360 degrees. The low profile of the fans makes them the ideal product for installations with low height limits, such as the case of suspended ceilings.



5 year fan housing and motor warranty

All specifications are subject to change without notice unless approved in submittal by S&P.

RES_TD-SILENT_0612

June 2012



CONSTRUCTION/SPECIFICATION CHECKLIST

Construction

The TD-SILENT consists of four (4) nominal sized in-line fans. All models are specifically designed for direct connection in-line with industry standard diameter round ducting.

The TD-SILENT models 100XS (4" or 5"), 150S and 200S are manufactured in tough reinforced plastic. Sound waves are directed through the perforated inner skin and absorbed by a layer of sound-absorbent insulation. Plus the TD-SILENT is fitted with rubber gaskets on the inlet and outlet to absorb vibrations.

Impellers

The impeller blades are molded in tough ABS plastic.

Motors

Models 100XS:

Single-phase, 120V 60Hz, shaded pole induction asynchronous motor in die cast aluminum. All motors include direct two speed connection and are also suitable for voltage speed control.

- Class I electrical insulation
- IP 44 Protection
- Class B Motor Insulation
- Safety auto reset Thermal Overload Protection (fuse type)
- Self-lubricating sleeve bearings.
- Suitable for working airstreams up to 104° F (40°C).

Models 150S and 200S:

Single-phase induction asynchronous motor, with permanent capacitor and external rotor in die cast aluminum. All models include direct two speed connection and are also suitable for voltage speed control.

- Suitable for working airstreams up to 140° F (60°C).
- Class I electrical insulation
- IP 44 Protection
- Thermal Overload Protection
- Class B Motor Insulation
- Sealed For Life, ball bearings

Code Approval

- All models have been independently safety tested by Underwriters Laboratories, Inc. and are UL and cUL Listed.
- Independently tested for Airflow Performance.
- The TD product range is certified by the Home Ventilating Institute (HVI) for Air Performance.
- All models are ENERGY STAR® qualified.
- All models are NAHB - National Green Building Green Approved.

ACCESSORIES



PG
Premium Intake
Grille



BOC/BOR
Interior Air
Valve



MCA
Backdraft
Shutter



MBR
Connector



MAR
Rectangular Duct
Adapter



MRJ
Grille

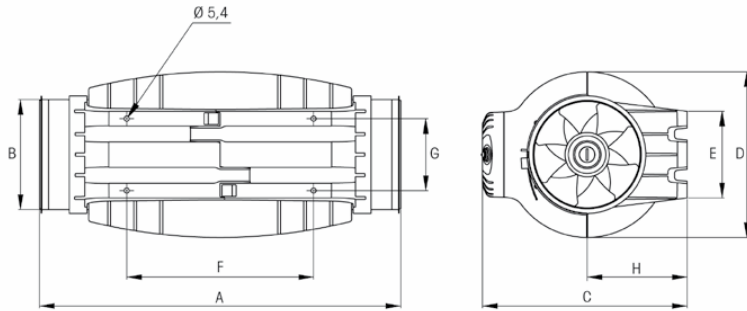


CVC
Continuous
Ventilation Controls



PERFORMANCE/DIMENSIONS

Dimensions (inches/mm)



Model	A	B Ø	C	D Ø	E	F	G	H
TD-100XS	22 ^{5/8}	3 ^{13/16}	9 ^{15/16}	8 ^{1/16}	3 ^{15/16}	9 ^{13/16}	3 ^{1/4}	4 ^{3/4}
TD-150S	19 ^{1/16}	5 ^{13/16}	10 ^{13/16}	8 ^{11/16}	4 ^{9/16}	9 ^{13/16}	3 ^{3/4}	5 ^{1/4}
TD-200S	22 ^{3/8}	7 ^{13/16}	12 ^{7/8}	10 ^{3/8}	5 ^{11/16}	13 ^{11/16}	5 ^{1/16}	6 ^{7/16}

Performance characteristics

All models include a direct two speed motor connection.

Model	Duct Dia. Ins.	Nom. RPM	Volts	Max. Watts	Speed	CFM v Static Pressure (SP) Ins. WG							Max. SP	Max operating temp. (°F)	Wgt. (lbs)
						0"	0.125"	0.25"	0.375"	0.5"	0.75"	1.0"			
TD-100XS	4"	2000	120	21	LS	108	82	48	-	-	-	-	0.4	104	11.9
	4"	2500	120	35	HS	143	121	91	59	23	-	-	0.6	104	
	5"	2000	120	21	LS	147	110	63	-	-	-	-	0.4	104	
	5"	2500	120	36	HS	203	175	138	84	33	-	-	0.6	104	
TD-150S	6"	2200	120	55	LS	239	209	181	154	120	62	-	0.95	140	13.2
	6"	2700	120	65	HS	333	315	286	271	257	178	77	1.2	140	
TD-200S	8"	2000	120	115	LS	409	367	333	306	271	183	46	1.2	140	19.2
	8"	2200	120	122	HS	530	503	472	443	415	349	204	1.2	140	

LS= Low Speed

HS = High Speed



Sound characteristics

Fan sound levels are measured in sones. At this time there are no sone level test standards available through HVI due to the fact that remote mounted fan noise levels are in proportion to the following: type of duct, length of duct, fan distance from the intake source and other miscellaneous factors. However, it is generally accepted that remote mounted venting is usually quieter than standard (in room) venting.



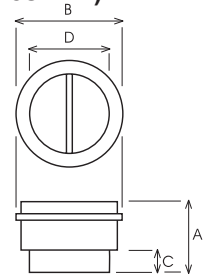
MCA

Backdraft dampers are installed at the fans' discharge. They prevent the entry of odors, air currents and prevent heat leaks when the exhauster is not in operation.



Model	Type TD
MCA-100	100
MCA-125	125
MCA-150	150
MCA-200	200
MCA-250	250
MCA-315	315

Dimensions (inches/mm)



MCA-100-315

Model	A	B	C	D
MCA-100	4 3/16 107	4 3/8 111	1 1/4 31	3 11/16 94
MCA-125	4 3/16 107	5 3/8 136	1 1/4 31	4 11/16 119
MCA-150	4 3/4 121	6 7/16 163	1 3/8 35	5 13/16 147
MCA-200	5 3/16 131	8 7/16 214	1 3/8 35	7 3/4 197
MCA-250	6 3/16 164	10 3/8 264	1 5/8 42	9 3/4 248
MCA-315	8 1/16 205	13 330	1 15/16 50	12 5/16 312

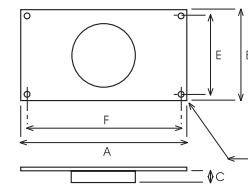
MAR

Connections for rectangular ducts enable TD devices to be connected to a rectangular duct.

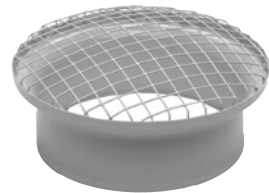


Model	Type TD	Nominal dim. of ducting L x H (in/mm)
MAR-100	100	9 x 6 224 x 140
MAR-125	125	9 x 6 224 x 140
MAR-150	150	11 x 7 280 x 180
MAR-200	200	12 x 8 315 x 200
MAR-250	250	16 x 10 400 x 250
MAR-315	315	20 x 12 500 x 315

Dimensions (inches/mm)



Model	A	B	C	E	F	G
MAR-100	10 3/8 264	7 1/16 180	1 5/16 33	6 5/16 160	9 5/8 244	3/8 9
MAR-125	10 3/8 264	7 1/16 180	1 5/16 33	6 5/16 160	9 5/8 244	3/8 9
MAR-150	12 5/8 320	8 11/16 220	1 7/16 37	7 7/8 200	11 13/16 300	3/8 9
MAR-200	14 355	9 7/16 240	1 7/16 37	8 11/16 220	13 3/16 335	3/8 9
MAR-250	17 5/16 440	11 7/16 290	1 5/8 42	10 5/8 270	16 9/16 420	3/8 9
MAR-315	21 1/4 540	14 355	2 1/16 52	14 355	20 1/2 520	3/8 9



MRJ

Grilles fit on the suction and the discharge sides of the installation. They prevent the entry of foreign bodies which could damage the fan.

Model	Type TD
MRJ100	100
MRJ125	125
MRJ150	150
MRJ200	200
MRJ250	250
MRJ315	315



MBR

Flanges enable TD devices to connect in a series.

Model	Type TD
MBR-125	125
MBR-150	150
MBR-200	200
MBR-250	250



TD Bathroom Exhaust Controls - ASHRAE 62.2

CVC - Continuous Ventilation Control



S&P's CVC allow a new or existing bath fan to run continuously on a low speed. In conjunction with an S&P TD fan a CVC will immediately improve the air quality in the home and reduce the damaging effects of moisture and mold.

The CVCs are designed to meet the requirements of ASHRAE 62.2 and the International Residential Code. In areas where ASHRAE 62.2 is not a requirement the CVC is still an economical choice to improve indoor air quality.

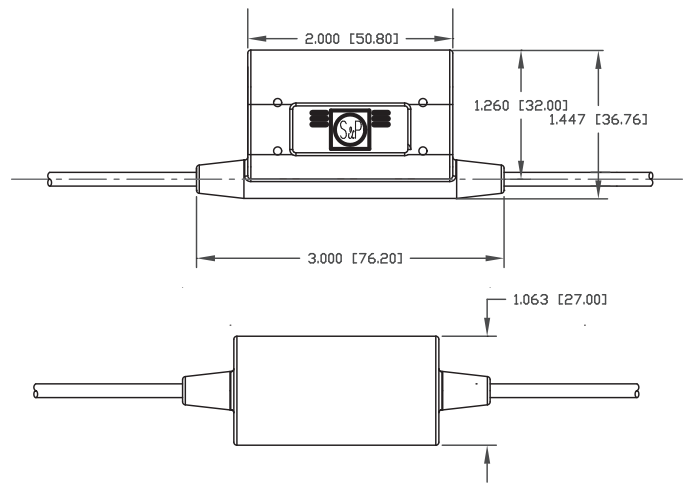
CVC Model	Fan Size	Application	Max. Flow	Continuous Flow @ .25"SP
CVC-100	100	Single Inlet	101 CFM	20 CFM
CVC-100x	100x	Single Inlet	135 CFM	20 CFM
CVC-150	150	Single Inlet	218 CFM	20 CFM
		Dual Inlet	293 CFM	40 CFM



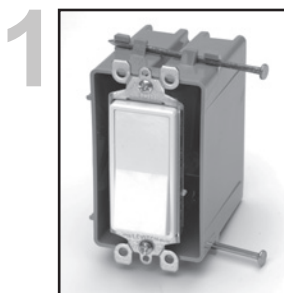
Features

- Reduces remodeling costs, helps meet ASHRAE 62.2 requirements
- Perfect for homes, apartments, dorms, hotels and elderly housing
- Economical and easy to install in your existing wall box
- CVC works with most fan controls, i.e. motion sensors, timers, speed controllers.
- Improves the indoor air quality in your home
- Undetectable, efficient and effective
- Operates with any standard switch
- No programming required
- 120V, 60 Hz, 3A Maximum

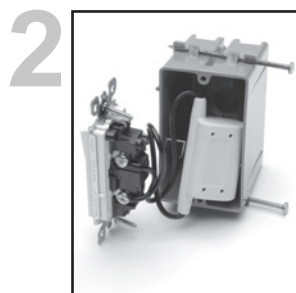
Dimensions in Inches (mm)



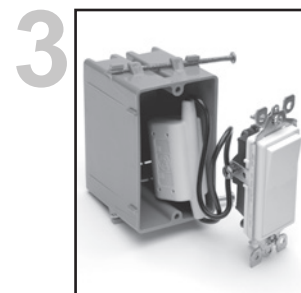
Easy Installation. . .



1 Attaches to any standard wall switch.



2 Simple 2 wire connection across the wall switch and fits into most standard wall/ junction boxes.



3 Completely installed in minutes!

MODEL PV

INLINE CENTRIFUGAL DUCT FAN



MODEL FEATURES

- Exhaust air up to 942 CFM with static pressure capabilities to 1.5" w.g.
- Galvanized steel casing with black backed enamel coating
- Pre-wired junction box
- Ideal for applications where space is limited
- Non-overloading backward inclined wheel for efficiency at higher static pressures
- AMCA Seal for Air Performance
- cULus Listed

MODEL OVERVIEW

The POWERVENT (PV) series of direct drive centrifugal in-line duct ventilation fans consists of twelve model sizes 4", 5", 6", 8", 10" and 12.4" respectively. All models are designed for direct connection in-line with standard diameter round ducting. Airflow performance values range from 108 CFM (PV-100) up to 942 CFM (PV-315x).

All PV fan models incorporate a powerful external rotor motor that has been factory matched to a non-overloading backward curved centrifugal fan wheel.

This powerful combination enables the PV fans to deliver exceptional airflow performances against high static pressure typically found in ducted ventilation systems. All motors within PV fans are fully speed controllable using voltage or frequency control regulators.

The PV series of duct exhaust or supply fans have been specifically designed for simple installation and many years of maintenance free operation. The PV fans can be mounted at any angle and at any point along the duct. The totally enclosed motor design allows the PV fans to operate in high moisture, lint and dust laden air. All models are manufactured with high quality materials and workmanship that is supported by a comprehensive **five (5) year warranty**.

All PV Fans feature a corrosion resistant galvanized steel casing with black baked enamel coating and are supplied with a strong mounting bracket and prewired junction box.

The PV100x fans feature Class F motor insulation.

5 year fan housing and motor warranty

CONSTRUCTION/SPECIFICATION CHECKLIST

Casing

- Manufactured from high grade pressed galvanized steel, with black baked enamel coating.
- Extra long inlet and discharge collars make installation quick and trouble free.
- Supplied with a strong galvanized steel mounting bracket.
- Supplied with a prewired junction box.

Wheel / Impeller

- Backward curved centrifugal type.
- Factory matched to an external rotor motor and dynamically balanced to eliminate vibration.

Motor

- Totally enclosed permanent split capacitor start and run external rotor motors.
- 115V 60Hz (single phase) electrical connection.
- Permanently sealed, self lubricating precision ball bearings.
- Safety Thermal Overload Protection Cut-Out (Automatic Reset Type).
- All Models are suitable for working airstreams up to 140° F

Code Approval

- All models have been independently safety tested by Underwriters Laboratories, Inc. and are UL and cUL Listed.
- Independently safety tested by Intertek Laboratories, and are ETL Listed.
- Independently tested for Airflow Performance. The PV range is licensed to bear the AMCA seal for Air Performance.

ACCESSORIES



BOC
Interior
Air Valve



CAR
Backdraft
Damper



ACOP-VENT
Antivibrating
coupling



SIL
Sound
Attenuator



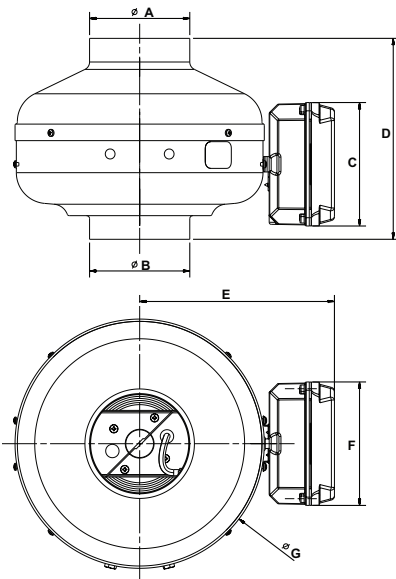
PER
Plastic louver
shutter



SC 15
Variable speed
control

PERFORMANCE/DIMENSIONS

Dimensions in inches/mm



Model	A	B	C	D	E	F	G	Weight lbs(kgs)
PV-100	3 ^{13/16} 97.5	3 ^{13/16} 97.5	4 ^{3/4} 120	7 ^{11/16} 196	7 ^{1/2} 190	4 ^{3/4} 120	9 ^{9/16} 243	7 3.0
PV-100x	3 ^{13/16} 97.5	3 ^{13/16} 97.5	4 ^{3/4} 120	7 ^{11/16} 196	7 ^{1/2} 190	4 ^{3/4} 120	9 ^{9/16} 243	7 3.0
PV-125	4 ^{13/16} 122.5	4 ^{13/16} 122.5	4 ^{3/4} 120	7 ^{13/16} 198	7 ^{1/2} 190	4 ^{3/4} 120	9 ^{9/16} 243	7 3.0
PV-125x	4 ^{13/16} 122.5	4 ^{13/16} 122.5	4 ^{3/4} 120	7 ^{13/16} 198	7 ^{1/2} 190	4 ^{3/4} 120	9 ^{9/16} 243	7 3.0
PV-150	5 ^{13/16} 147	5 ^{13/16} 147	4 ^{3/4} 120	8 ^{7/16} 214	9 ^{5/16} 236	4 ^{3/4} 120	13 ^{1/8} 334	11 5.0
PV-150x	5 ^{13/16} 147	5 ^{13/16} 147	4 ^{3/4} 120	8 ^{7/16} 214	9 ^{5/16} 236	4 ^{3/4} 120	13 ^{1/8} 334	11 5.0
PV-200	7 ^{13/16} 198	7 ^{13/16} 198	4 ^{3/4} 120	8 ^{3/4} 223	9 ^{5/16} 236	4 ^{3/4} 120	13 ^{1/8} 334	11 5.0
PV-200x	7 ^{13/16} 198	7 ^{13/16} 198	4 ^{3/4} 120	8 ^{3/4} 223	9 ^{5/16} 236	4 ^{3/4} 120	13 ^{1/8} 334	11 5.0
PV-250	9 ^{3/4} 248	9 ^{3/4} 248	4 ^{3/4} 120	8 ^{1/16} 205	9 ^{5/16} 236	4 ^{3/4} 120	13 ^{1/8} 334	13 6.0
PV-250x	9 ^{3/4} 248	9 ^{3/4} 248	4 ^{3/4} 120	8 ^{1/16} 205	9 ^{5/16} 236	4 ^{3/4} 120	13 ^{1/8} 334	13 6.0
PV-315	12 ^{5/16} 312	12 ^{5/16} 312	4 ^{3/4} 120	9 ^{3/16} 233	10 ^{9/16} 269	4 ^{3/4} 120	15 ^{13/16} 401	21 10.0
PV-315x	12 ^{5/16} 312	12 ^{5/16} 312	4 ^{3/4} 120	9 ^{3/16} 233	10 ^{9/16} 269	4 ^{3/4} 120	15 ^{13/16} 401	21 10.0

Air Performance

Model No.	Nom. RPM	Volts	Max. Watts	CFM v Static Pressure (SP) Ins. WG									Max. SP	Duct Dia. Ins.
				0"	0.125"	0.25"	0.375"	0.5"	0.75"	1.0"	1.25"	1.5"		
PV-100	1400	115	57	108	100	92	85	78	66	52	33	18	1.70	4"
PV-100x	2880	115	84	153	142	130	120	111	96	80	63	34	1.85	4"
PV-125	2350	115	58	128	104	85	74	63	47	32	15	-	1.43	5"
PV-125x	2745	115	85	206	190	170	153	135	110	88	62	33	1.77	5"
PV-150	2750	115	78	245	205	177	157	129	93	59	-	-	1.20	6"
PV-150x	2700	115	130	390	367	340	312	285	233	193	153	110	2.05	6"
PV-200	3100	115	130	402	375	350	327	296	239	179	135	85	1.94	8"
PV-200x	2930	115	180	544	515	485	446	415	360	312	273	230	2.64	8"
PV-250	3000	115	170	568	533	502	471	440	370	312	263	221	2.61	10"
PV-250x	3045	115	214	618	595	570	540	510	450	390	340	297	2.80	10"
PV-315	2600	115	170	654	605	570	525	487	408	333	265	203	2.21	12.4"
PV-315x	2650	115	370	942	905	859	811	762	622	508	440	390	3.90	12.4"

Performance certified is for installation type D-Ducted inlet, Ducted outlet. Performance ratings do not include the effects of appurtenances (accessories). Speed (RPM or RPS) shown is nominal. Performance is based on actual speed of test.



S&P, Div. of Soler & Palau Ventilation Group, certifies that the PV range shown herein is licensed to bear the AMCA Seal. The ratings shown are based on tests and procedures performed in accordance with AMCA Publication 211 and comply with the requirements of the AMCA Certified Ratings Program.



*PV 150x and larger ENERGY STAR® qualified.



Sound

Fan sound levels are measured in sones. At this time there are no sound level test standards available through HVI due to the fact that remote mounted fan noise levels are in proportion to the following: type of duct, length of duct, fan distance from the intake source and other random factors. It is generally accepted that remote mounted venting is usually quieter than standard (in room) venting.



KIT - PV BATHROOM EXHAUST KITS

FEATURING PV-POWERVENT FANS

S&P PV-POWERVENT Series fans are also available as easy-to-install kits. This ultra powerful bathroom fan offers a choice of single or dual vent exhaust. These kits are used for installations that require long or complicated duct runs.

All PV kits have standard 8-year warranty.



PV Deluxe Exhaust Kits



Standard Exhaust Kits



KIT-PV100

- 1 PV100 exhaust fan
- 1 plastic round grille (PG-100)
- Mounting bracket

KIT-PV100x

- 1 PV100x exhaust fan
- 1 plastic round grille (PG-100)
- Mounting bracket

KIT-PV150

- 1 PV150 exhaust fan
- 1 plastic round grille (PG-150)
- Mounting Bracket

KIT-PV100x-DV

- 1 PV100x exhaust fan
- 2 plastic round grilles (PG-100)
- 1 Y-fitting (SY-4)
- Mounting Bracket

KIT-PV150-DV

- 1 PV150 exhaust fan
- 2 plastic round grilles (PG-150)
- 1 Y-fitting (SY-6)
- Mounting Bracket

KIT-PV200-DV

- 1 PV200 exhaust fan
- 2 plastic round grilles (BOR-200)
- 1 Y-fitting (SY-8)
- Mounting Bracket



MODEL SWF

SIDEWALL CENTRIFUGAL FAN

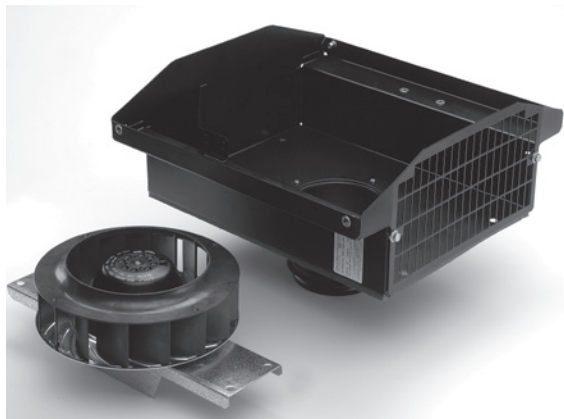


MODEL FEATURES

- Exhaust air up to 416 CFM with static pressure capabilities to 1.5" w.g.
- Galvanized steel casing with black backed enamel coating
- Pre-wired junction box
- Ideal for applications where space is limited
- Non-overloading backward inclined wheel for efficiency at higher static pressures
- cULus Listed

MODEL OVERVIEW

The SWF series utilizes the same powerful (high static) motor found in the popular PV Series fans, yet the SWF series is encased in an exterior mounted housing. The outdoor rated exterior housing provides easy access from the outside of a building or dwelling. This makes the SWF a great solution for installations where attic space or easy indoor access is difficult and not suitable for traditional PV style in-line mounting. The Sidewall Fan Series (SWF) of direct drive centrifugal ventilation fans consists of five model sizes ranging from 4-8". All models are designed for direct connection in-line with standard diameter round ducting. Airflow performance values range from 119 CFM up to 416 CFM.



All SWF series models incorporate a powerful external rotor motor that has been factory matched to a non-overloading backward curved centrifugal fan wheel.

This powerful combination enables the SWF to deliver exceptional airflow performances against high static pressure typically found in ducted ventilation systems. All motors within the SWF series are fully speed controllable using voltage or frequency control regulators.

The SWF series has been designed for easy through the wall installation. The totally enclosed motor design allows

for the SWF to operate in high moisture, lint and dust laden air. All models are manufactured with high quality materials and workmanship that is supported by a comprehensive **five (5) year warranty**.

The SWF series features a corrosion resistant galvanized steel casing with a baked enamel coating that can be painted to match the exterior wall. The unit also includes a built-in backdraft damper and an extended opening exhaust grille. The larger grille allows for the easy exhaust of "dirty" or lint laden air while the spring-loaded backdraft damper helps prevent insects, etc. from entering duct work.



Built-in Spring-loaded Backdraft Damper

5 year fan housing and motor warranty

All specifications are subject to change without notice unless approved in submittal by S&P.
RES_SWF_0612



CONSTRUCTION/SPECIFICATION CHECKLIST

Casing

- Manufactured from high grade pressed galvanized steel, with baked enamel coating.
- Removable top for easy access to motor for cleaning or inspection.
- Large grille opening for easy passing of lint and other potentially clogging materials.
- Supplied with a prewired junction box.

Wheel / Impeller

- Backward curved centrifugal type.
- Factory matched to an external rotor motor and dynamically balanced to eliminate vibration.

Motor

- Totally enclosed permanent split capacitor start and run external rotor motors.
- 115V 60Hz (single phase) electrical connection.
- Permanently sealed, self lubricating precision ball bearings.
- Safety Thermal Overload Protection Cut-Out (Automatic Reset Type).
- All Models are suitable for working airstreams up to 140° F

Code Approval

- All models have been independently safety tested by Underwriters Laboratories, Inc. and are UL and cUL Listed.
- The SWF product range is certified by the Home Ventilating Institute (HVI) for Air Performance.

ACCESSORIES



SC 15
Variable speed
control



BOC/BOR
Interior Air Valve



SPT-100x
Pressure Switch



CS-325
Current Sensor

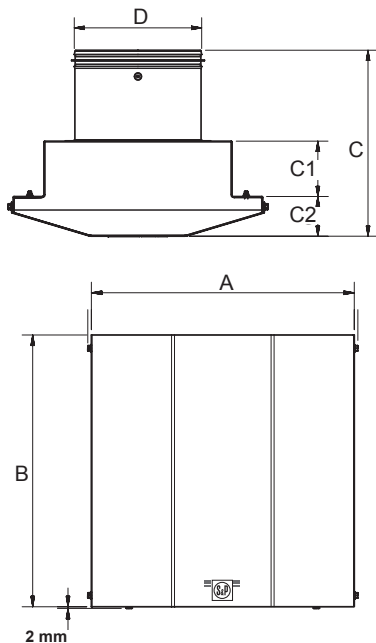


MFL
Filter Box



PERFORMANCE/DIMENSIONS

Dimensions in inches/mm



Model	A	B	C	C1	C2	D
SWF-100	13 1/4 337	13 1/4 337	9 228	3 76	2 7/16 62	4 100
SWF-100x	13 1/4 337	13 1/4 337	9 228	3 76	2 7/16 62	4 100
SWF-150	15 1/2 394	13 1/4 337	10 3/16 256	3 76	2 7/16 62	6 150
SWF-150x	15 1/2 394	16 1/16 408	10 254	3 3/16 81	2 7/16 62	6 150
SWF-200	15 1/2 394	16 1/16 408	11 7/16 290	3 3/8 87	2 7/16 62	8 200

Air Performance

Model	RPM	Volts	Frequency	Current	Watts	CFM vs. Static Pressure (SP) Ins. WG									
						0"	0.125"	0.25"	0.375"	0.5"	0.75"	1.0"	1.25"	1.5"	
SWF-100	2200	120	60 Hz	0.52 A	57	119	106	92	78	64	44	26	-	-	
SWF-100X	2600	120	60 Hz	0.8 A	90	171	162	152	142	118	90	66	46	28	
SWF-150	2600	120	60 Hz	0.8 A	90	235	221	197	181	168	122	81	60	27	
SWF-150X	2800	120	60 Hz	1.0 A	115	354	332	310	287	266	230	192	147	96	
SWF-200	2800	120	60 Hz	1.0 A	115	416	395	368	341	324	287	233	184	132	



Sound

Fan sound levels are measured in sones. At this time there are no sone level test standards available through HVI due to the fact that remote mounted fan noise levels are in proportion to the following: type of duct, length of duct, fan distance from the intake source and other random factors. It is generally accepted that remote mounted venting is quieter than standard (in room) venting.



BATHROOM EXHAUST GRILLES FOR INLINE FANS

Featuring Vent Lights and Premium Grilles

S&P's Grille Options give you the choice of seven (7) aesthetically pleasing grilles designed to match any bathroom decor. You can choose from our Vent Lights, Premium Grilles or Adjustable Grilles to fit your needs.

These grilles are designed to be used exclusively with one of S&P's remotely mounted inline fans (TD, PV, SWF) for virtually silent bathroom ventilation. Inline fans give you the option to mount your grille over the shower, toilet, tub, or in multiple locations (dual vent).

With S&P's Grille Options the choice is yours!

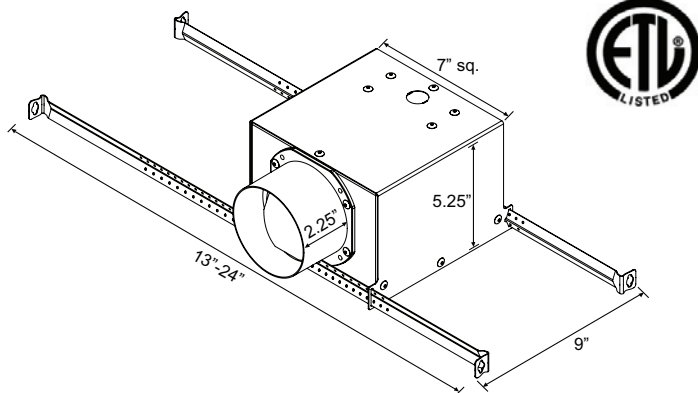
Vent Lights Available with LED Bulbs



S&P's new Vent Lights give you ventilation that is "Out-of-Sight and Out-of-Mind"! The Vent Lights appear to be a regular can light, and when combined with a remotely mounted fan, the noise and unsightly look of the traditional bathroom fan are gone! The Vent Lights are aesthetically pleasing grilles with lights that will match any bathroom decor.

Model	Description
VLED-100	Vent Light with PAR30 LED Bulb
VLH-100	Vent Light with PAR30 Halogen Bulb
VLF-100	Vent Light with Energy Star Rated Compact Fluorescent Bulb

Dimensions (inches)



Features:

- Longer duct collar for 4" duct
- Extendable hanger bars up to 24"
- 7.5" grille
- Built-in backdraft damper
- 3 bulb options

Why Choose the Vent Light with LED Bulbs?

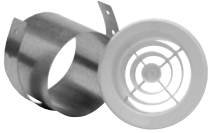
S&P's respect for the environment extends to its Vent Lights with the optional LED Bulb. The benefits to the LED Bulbs include:

- Built to last a minimum of 60,000 hours, plus the LED's use a fraction of the energy that a traditional incandescent or halogen lamp uses
- LED's contain no mercury so they are easy to dispose of, unlike other energy efficient bulbs
- The LED lamps run cool and are shock resistant, making them safer for use in your home



Premium Grilles

PG



S&P's premium grilles come standard with steel collars for easy mounting and installation.

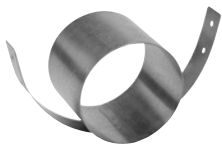
Model	Description
PG-100	4" Plastic Grille with 4" Steel Collar
PG-150	6" Plastic Grille with 6" Steel Collar

Grille Dimensions (in inches)



Grille	Dia.	Height	Fits Duct Dia.	Fits Collars
PG-150G	8 1/8	1 5/8	6"	PG-150D
PG-100G	4 5/8	1 1/2	4"	PG-100

Collar Dimensions (in inches)



Collar	Diameter	Length
PG-100D	3 3/4	3 1/4
PG-150D	5 3/4	4 5/8

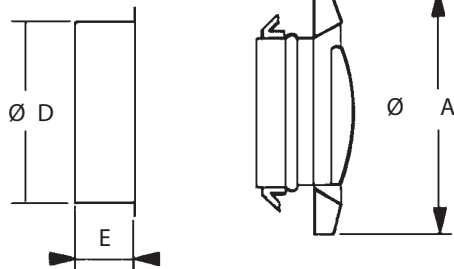
PG Collar

Adjustable Grilles

BOR/BOC



Exhaust grilles for bathrooms, toilets and other small rooms. All models offer an adjustable central valve to regulate the airflow.



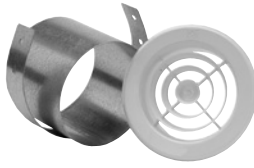
Model	A	D	E	Weight (lbs)
BOR/BOC-100	145	100	50	1
BOR/BOC-125	145	125	50	1
BOR/BOC-150	204	160	50	1
BOR/BOC-200	244	200	50	1



ADDITIONAL GENERAL ASSEMBLY ACCESSORIES



BOR/BOC
Round plastic/metal adjustable grille



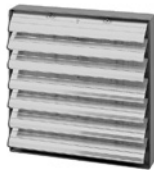
PG
Round grille without built-in backdraft damper



MBR
Connection Flanges



PER-W
Plastic louver shutter



PER
High pressure aluminum louver shutter



GRA
Aluminum exterior fixed grilles



MFL
Filtering Box



SR
Reducer



SY
Y sheet metal adapter



ID
Flexible round duct



SIL
Acoustic attenuators

Electrical accessories



EPBT
Electronic push button timer



SCS
Speed control slide type



SC
Speed control



KIT - CLOTHES DRYER BOOSTING KITS

FEATURING PV-100x FANS

If you have a dryer with long or complicated duct runs, S&P offers the perfect solution to increase dryer efficiency: the PV100x Dryer Booster Fan. The PV100x has been specifically designed to handle dryer boosting applications when overcoming long or complicated duct runs. This system helps save on drying time, moisture build-up, wear and tear on your dryer, and helps save on your electric bill. The centrifugal blade design is able to overcome extreme resistance from the most challenging installations. The PV-100x offers a fully enclosed motor, which ensures a long, trouble free life; thus making it the right choice for enhancing the performance of your clothes dryer.

The PV-100x fan is available separately or as part of a kit that includes everything necessary for a hands-free operation. Once the system is installed you will no longer waste time, energy or unnecessary wear and tear on your dryer. The next step is to select which activation best fits your needs.

How to activate the PV-100x fan for clothes dryer boosting



PV-100xps

Pressure Switches

Pressure switches are a viable method of fan activation and a good solution for many installations. The pressure switch senses the pressure differential in the duct created by the dryer operation, thus activating the fan. Conversely, when the dryer is deactivated, the pressure switch senses this differential and the fan is deactivated. S&P's PV-100xps utilizes a compact pressure sensor and run timer enclosed within the junction box and mounted to the fan housing. The pressure sensor is also available as an accessory.



DBF-100xc

Current Sensors

Current sensors are S&P's "preferred" method of activation. They are "fail-safe", as there is no maintenance required on the current sensor and they're easy to install. The current sensing device can be installed at the outlet (where the dryer plugs into the wall) or at the circuit breaker box. When the device senses current going to the dryer, it activates the fan and vice-versa. No thought! No maintenance! Our choice!



IL-115/230

Interlocks

Interlocks, like Current Sensors, are another "fail-safe" method of clothes dryer booster activation. The interlocks senses when the fan is running and activates the dryer. Used as a safety feature, if the fan is not running or if there is a problem with the fan the dryer will not turn on.



NOTE

The PV-100x Dryer Booster fan is suitable for use with duct runs of up to 105 linear feet of 4" rigid duct or a maximum of 6 elbows and 80 feet.



All 3 activation methods are available as accessories or in the S&P's all inclusive dryer booster kits.

SWF - Sidewall Mount Exhaust Fan for Dryer Boosting



The sidewall unit can be paired with a current sensor or pressure switch when interior duct access in a home, apartment or townhouse is limited or difficult. The expanded exhaust grille allows for the easy passing of lint laden air. The SWF utilizes the same powerful motor as the PV-100x and is also suitable for duct runs up to 105 feet or up to 80 feet with 6 elbows. The low profile SWF fan is easy to install with an epoxy coating that can be painted to match the exterior of the building. The SWF also offers the same trusted 5 year warranty.



MODEL DBB

DRYER BOOSTER



MODEL FEATURES

- Compact size fits easily within limited ceiling space
- Quick & easy access for cleaning & other maintenance
- Powerful air moving capabilities to overcome ducting restrictions
- Quiet, efficient & reliable operation
- 5 year warranty ensures peace of mind

MODEL OVERVIEW

The DBB is designed specifically for the requirements of high rise en suite laundry rooms. Popular in high rise condominium and like buildings because of the low profile, ceiling or wall mount. These DBB In-Line Dryer Booster Fan models are built with a well balanced motor impeller assembly, and a backward inclined wheel for smooth, quiet operation.

The motor is designed for an extended service life and it incorporates a thermal cutout for safety.

CONSTRUCTION/SPECIFICATION CHECKLIST

Housing

- Low profile for optimum ceiling clearance.
- Powder coated, galvanized steel resists corrosion.
- Complete with 4 sturdy mounting feet and rubber vibration isolators.
- Easily accessed electrical compartment.

Motor

- Capacitor run, totally enclosed 4 pole motor is rated for continuous use.
- Permanently lubricated for worry free operation.
- Auto-reset thermal overload protection.

Impeller

- Non-overloading, backward inclined wheel is ideal for light debris such as lint.
- Entire assembly is mounted on a plate attached by a hinge and 2 bolts with wingnuts for ease of inspection or cleaning.

PERFORMANCE/DIMENSIONS

Dimensions

Model	Dimension Data
DBB-200	10.5" x 11.0" x 6.0"
DBB-300	12.0" x 12.0" x 8.0"



S&P, Div. of Soler & Palau Ventilation Group, certifies that the DBB range shown herein is licensed to bear the AMCA Seal. The ratings shown are based on tests and procedures performed in accordance with AMCA Publication 211 and comply with the requirements of the AMCA Certified Ratings Program.

Performance

Model	Nom. RPM	VOLTS	MAX WATTS	CFM v Static Pressure (SP) Inches WG										MAX SP.	DUCT DIA.
				0"	0.125"	0.25"	0.375"	0.5"	0.75"	1.0"	1.5"	2.0"			
DBB-200	3050	120	109	211	199	191	183	175	156	135	97	51	2.32"	5"	
DBB-300	2600	120	159	317	300	293	290	267	255	227	174	120	3.1"	6"	

MODELS FF & FFC

CEILING AND INLINE/CABINET VENTILATORS



Model FF

MODEL FF FEATURES

- Exhaust air up to 1500 CFM
- Forward curve centrifugal wheel for high static pressure capabilities to 1" w.g.
- Resilient mount, low RPM motor for quiet operation (except FF50 & FF80)
- Speed controllable
- AMCA Seal for Air Performance
- cULus Listed (except FF50 & FF80 which are UL only)



Model FFC

MODEL FFC FEATURES

- Exhaust air up to 3600 CFM
- Forward curve centrifugal wheel for high static pressure capabilities to 1" w.g.
- Resilient mount, low RPM motor for quiet operation
- Speed controllable
- AMCA Seal for Air Performance
- cULus Listed

MODEL OVERVIEW

The extremely quiet FF and FFC ventilators are available from 50 to 3600 CFM, with static pressure capabilities to 1". All units have centrifugal blower wheels and low RPM motors on resilient mounts (except FF50 and FF80).

The forward curved centrifugal wheel with its high static pressure capability makes these ventilators suitable for either ducted or nonducted applications. They include removable blower assemblies and plug-in permanently lubricated motors for ease of servicing and cleaning.

1 year fan housing warranty, 1 year motor warranty



CONSTRUCTION/SPECIFICATION CHECKLIST

Grille

- Conceals interior.
- Low profile styling, blends with any decor.
- White polymeric (FF50 - FF300).
- Metal finished with white enamel finish (FF400-FF1500).

Blower

- Low RPM for quiet operation, speed controllable.
- Resilient anti-vibration mounts (FF50 & FF80 rigid mount).
- Balanced, polymeric, centrifugal blower wheel for quiet, efficient performance. (Metal wheel on FFC2000 & FFC3500).
- Permanently lubricated, thermally protected motor.
- Plug-in motor.
- Designed for continuous operation.

Housing

- Rugged, 20 gauge galvanized steel.
- Duct connector.
- 1/2" acoustic insulation inside (except FF50, FF80 & FFC's).
- Integral automatic backdraft damper.
- Easy inline conversion available (FF100-FF1500).
- May be installed in ceiling or wall.
- Mounting brackets for easy installation and adaptability to numerous mounting requirements.
- Factory-shipped in horizontal discharge position, easily converted to vertical discharge.
- FFC inline units have a removable panel which allows for easy motor access without disturbing ductwork.

AMCA Seal

- AMCA Air and Sound Licensed

UL Label

- cULus listed (except FF50 & FF80 which are UL only).



MODEL FF PERFORMANCE

FF CEILING VENTILATORS

MODEL FF	CFM / Sones at Static Pressure (PS - Inches of H ₂ O)										AMPS @ 60HZ/ WATTS	RPM @ 1/8	Voltage	Average Ship Wt. Lbs
	0	1/10	1/8	1/4	3/8	1/2	5/8	3/4	7/8	1				
100	136	115	109	93	80	65	44	-	-	-	1.1/87	640	120	23
	0.5	0.8	0.9	1.3	1.8	2.3	3.0	-	-	-				
150	181	161	157	141	132	124	114	94	62	-	1.3/100	710	120	23
	1.3	1.4	1.5	2.2	2.6	3.1	3.6	4.1	4.6	-				
200	231	214	210	196	186	177	165	144	113	51	1.8/127	740	120	23
	1.6	1.8	1.7	2.3	2.9	3.5	4.1	4.9	5.3	5.3				
250	272	261	259	250	242	233	218	201	165	99	2.1/166	830	120	23
	2.1	2.3	2.2	2.9	3.3	3.9	4.4	4.8	5.5	5.8				
300	312	309	308	303	296	287	273	254	219	125	2.6/212	905	120	23
	2.8	2.9	2.9	3.3	3.5	3.9	4.3	4.7	5.1	5.6				
400	480	442	434	388	344	299	229	182	114	-	1.4/146	735	120	34
	2.0	2.4	2.3	2.8	3.3	3.8	4.5	4.8	5.4	-				
500	538	520	514	491	463	434	389	339	282	186	2.2/232	810	120	34
	3.0	3.1	3.3	3.6	4.0	4.4	5.0	5.7	6.2	6.7				
700	722	704	701	667	640	607	571	534	453	333	2.9/313	960	120	34
	4.5	4.6	4.7	4.8	5.0	5.2	5.6	6.2	7.1	7.2				
900	918	905	901	877	842	793	725	636	536	390	3.0/306	650	120	64
	3.8	4.0	4.1	4.0	4.2	4.3	4.4	4.9	4.5	5.3				
1500	1578	1526	1513	1438	1371	1285	1198	1103	1000	816	5.0/468	955	120	64
	8.6	8.4	8.4	8.1	7.5	7.0	6.7	6.2	5.8	5.8				

COMPACT FF CEILING VENTILATORS

MODEL FF	CFM / Sones at Static Pressure (PS - Inches of H ₂ O)										AMPS @ 60HZ/ WATTS	RPM @ 1/8	Voltage	Average Ship Wt. Lbs
	0	1/10	1/8	1/4	3/8	1/2	5/8	3/4	7/8	1				
50	52	49	47	42	29	-	-	-	-	-	0.8/48	1870	120	4
	3.9	4.3	4.4	4.6	5.5	-	-	-	-	-				
80	89	81	80	68	36	-	-	-	-	-	0.75/48	1280	120	7
	3.9	3.8	3.8	3.8	3.9	-	-	-	-	-				

Performance ratings include the effects of inlet grille and backdraft damper. Speed (RPM) shown is nominal. Performance is based on actual speed of test. The sound ratings shown are loudness values in fan sones at 5' (1.5m) in a hemispherical free field calculated per AMCA Standard 301. Values shown are for installation Type B: free inlet fan sone levels. Performance certified is for installation Type B: Free inlet, Ducted outlet.



S&P, Div. of Soler & Palau Ventilation Group, certifies that the Models FF/FFC shown herein are licensed to bear the AMCA Seal. The ratings shown are based on test and procedures performed in accordance with AMCA Publication 211 and AMCA Publication 311 and comply with the requirement of the AMCA Certified Ratings Program.





MODEL FFC PERFORMANCE

FFC INLINE/CABINET VENTILATORS

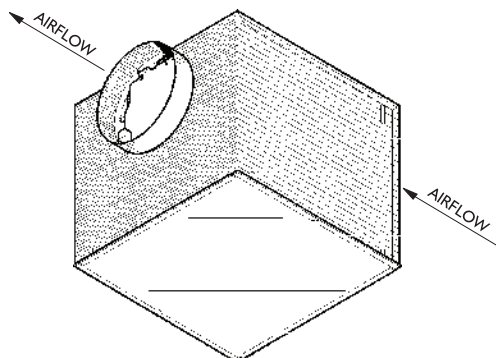
MODEL FFC	CFM / Sones at Static Pressure (PS - Inches of H ₂ O)										AMPS @ 60HZ/ WATTS	RPM @ 1/8	Voltage	Average Ship Wt. Lbs.
	0	1/10	1/8	1/4	3/8	1/2	5/8	3/4	7/8	1				
100	121	108	106	97	93	86	70	44	-	-	1.0/87	760	120	23
	0.5	0.7	0.7	1.1	1.4	1.8	2.1	2.4	-	-				
150	153	148	147	140	134	125	111	91	54	-	1.3/100	920	120	23
	0.9	1.0	1.1	1.4	1.6	1.9	2.1	2.2	2.4	-				
200	205	196	195	190	185	175	158	135	96	47	1.8/127	865	120	23
	1.7	1.9	1.9	2.1	2.3	2.4	3.0	3.3	3.4	3.4				
250	248	245	245	241	235	224	208	183	141	84	2.1/166	1005	120	23
	2.0	2.3	2.3	2.8	2.8	3.2	3.4	3.6	3.9	3.8				
300	300	294	293	285	274	259	243	214	168	113	2.6/212	1145	120	23
	2.9	3.0	3.1	3.3	3.4	3.5	3.6	3.7	4.0	3.9				
400	450	415	406	360	313	271	223	167	90	6.0	1.4/146	775	120	34
	1.4	1.6	1.6	1.9	2.2	2.6	2.9	3.4	3.6	3.9				
500	546	526	519	496	472	447	407	364	306	232	2.2/232	890	120	34
	2.4	2.4	3.4	3.7	3.9	3.8	3.9	4.0	4.3	4.3				
700	704	686	681	656	631	604	575	533	480	412	2.9/313	1090	120	34
	3.6	3.8	3.7	3.9	4.0	4.2	4.3	4.4	4.7	5.0				
900	930	902	894	853	807	754	685	587	442	300	3.0/306	810	120	64
	3.7	3.8	3.8	3.8	3.7	3.8	3.9	4.0	4.0	4.1				
1500	1275	1228	1214	1152	1092	1029	958	871	764	631	5.0/468	1055	120	64
	6.8	6.8	6.7	6.5	6.3	6.0	6.0	6.0	6.0	6.1				

Performance ratings include the effects of backdraft damper. Speed (RPM) shown is nominal. Performances based on actual speed of test. The sound ratings shown are loudness values in fan sones at 5" (1.5m) in a hemispherical free field calculated per AMCA Std. 301. Values shown are for installation Type D: ducted inlet fan sone levels. Ratings do not include the effect of duct end correction. Performance ratings include the effects of 18 feet of round inlet duct and, if needed, a rectangular to round duct transition in the airstream. Performance certified is for Installation Type D; Ducted inlet, Ducted outlet.

FFC CABINET VENTILATORS

MODEL FFC	CFM / Sones at Static Pressure (PS - Inches of H ₂ O)										AMPS @ 60HZ/ WATTS	RPM @ 1/8	Voltage	Average Ship Wt. Lbs.
	0	1/10	1/8	1/4	3/8	1/2	5/8	3/4	7/8	1				
2000	1891	1803	1791	1657	1508	1347	1165	808	-	-	5.8/590	965	120	92
	10.3	9.8	9.4	9.0	8.6	9.1	8.9	7.0	-	-				
3500	3605	3498	3452	3278	3073	2983	2679	2429	2093	1693	5.4/1205	1105	240	139
	15.3	14.8	14.5	14.1	13.1	12.8	12.1	11.8	11.9	10.8				

Performance ratings do not include the effects of appurtenances (accessories). Speed (RPM) shown is nominal. Performance is based on actual speed of test. The sound ratings shown are loudness values in fan sones at 5' (1.5m) in a hemispherical free field calculated per AMCA Std. 301. Values shown are for installation Type D: ducted inlet fan sone levels. Ratings do not include the effect of duct end correction. Performance certified is for Installation Type D: Ducted inlet, Ducted outlet.



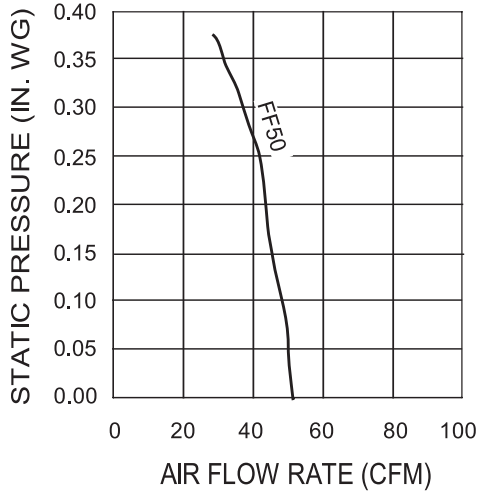
S&P, Div. of Soler & Palau Ventilation Group, certifies that the Models FF/ FFC shown herein are licensed to bear the AMCA Seal. The ratings shown are based on test and procedures performed in accordance with AMCA Publication 211 and AMCA Publication 311 and comply with the requirement of the AMCA Certified Ratings Program.



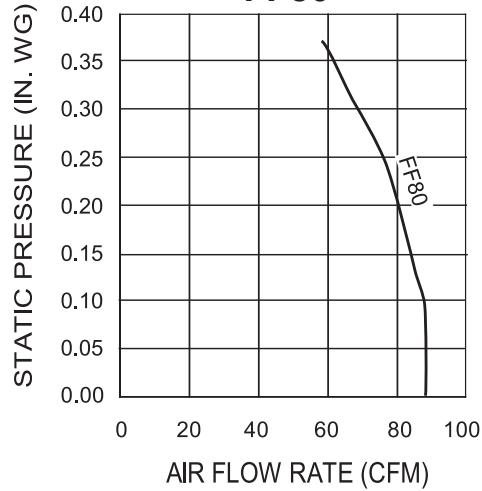


FF CEILING VENTILATORS QUICK SELECTION GUIDE

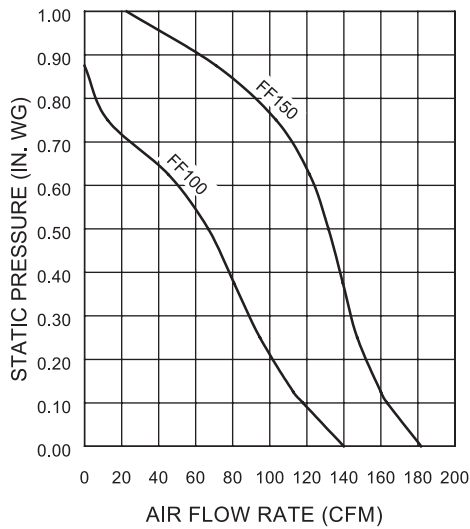
FF50



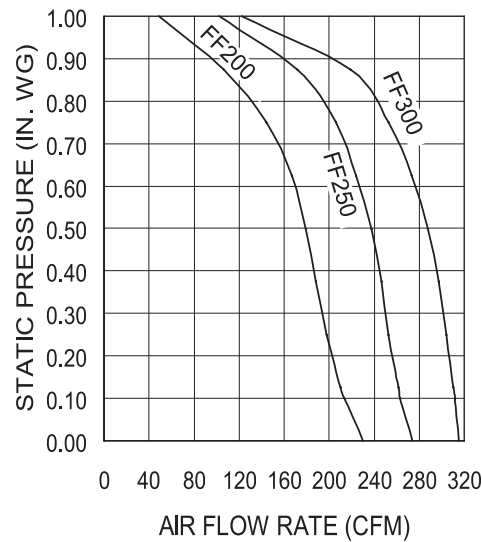
FF80



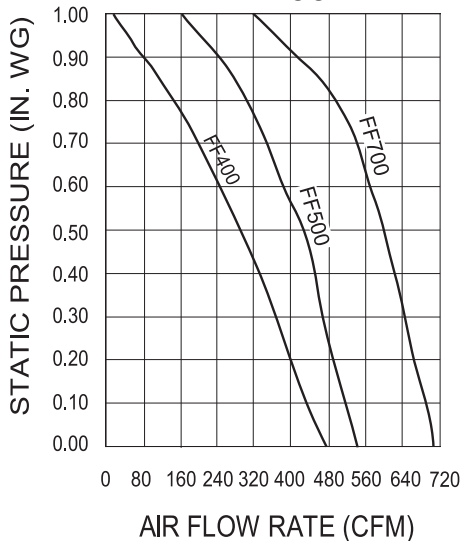
FF100, FF150



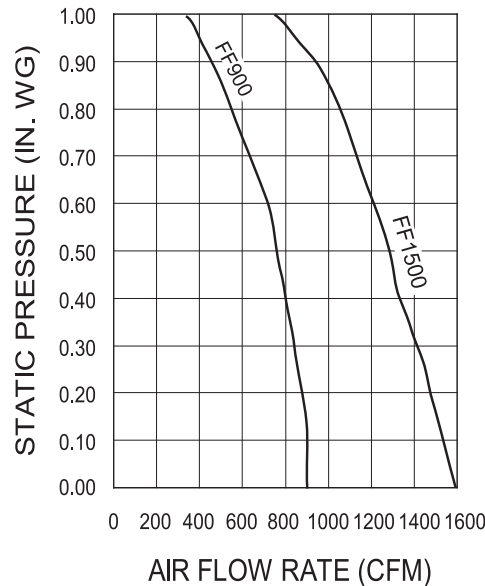
FF200, FF250, FF300



FF400, FF500, FF700



FF900, FF1500

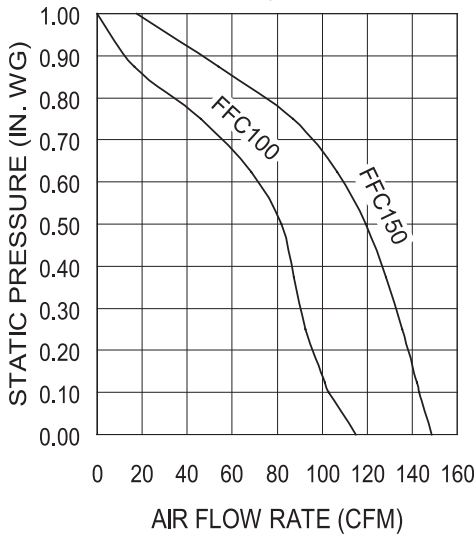


Models FF50, 80, 100, 150, 200, 250, 300, 400, 500, 700, 900, and 1500 Performance certified is for installation type B: Free inlet, Ducted outlet. Performance ratings include the effects of inlet grille and backdraft damper.

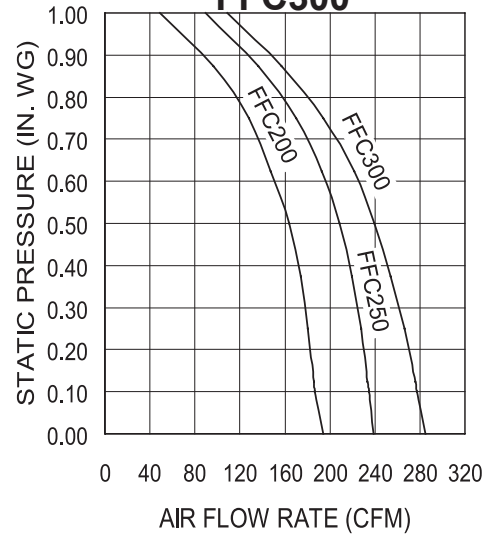


FFC INLINE/CABINET VENTILATORS QUICK SELECTION GUIDE

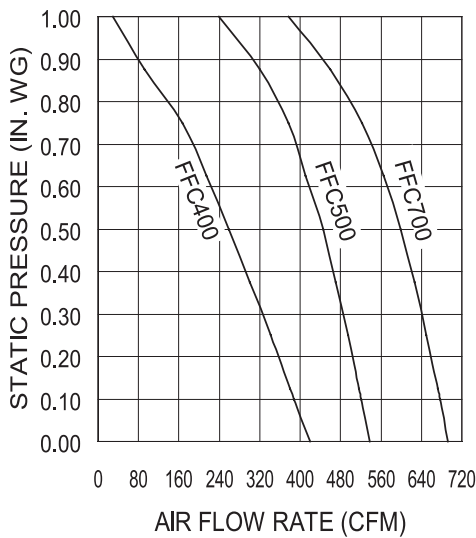
FFC100, FFC150



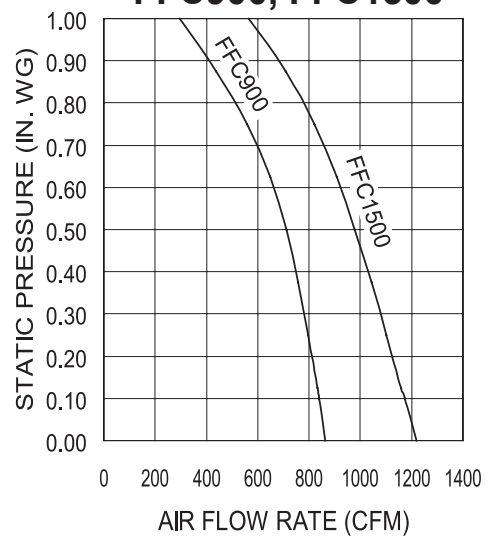
FFC200, FFC250, FFC300



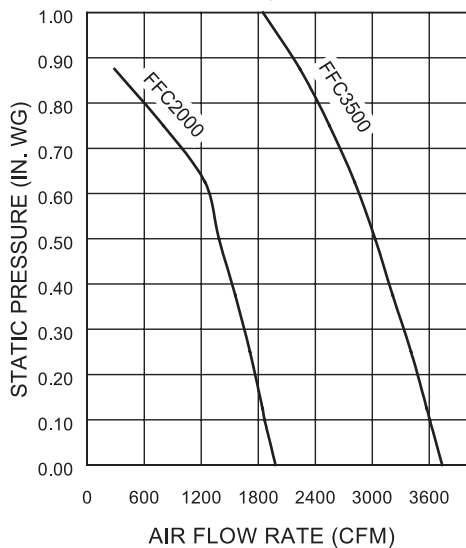
FFC400, FFC500, FFC700



FFC900, FFC1500



FFC2000, FFC3500



FF & FFC QUICK SELECTION GUIDELINES

1. Locate desired CFM on bottom horizontal axis of graph.
2. Locate system static pressure on left vertical axis of graph.
3. Determine intersection of CFM and static pressure.
4. Select fan curve to the right of this intersection.
5. Solid state speed control may be used for selections left of curve, up to 50% CFM reduction.

Models FFC100, 150, 200, 250, 300, 400, 500, 700, 900 and 1500 Performance certified is for installation type D: Ducted inlet, Ducted outlet. Performance ratings include the effects of backdraft damper, 18 feet of round inlet duct and, if needed, a rectangular to round duct transition.

Models FFC2000 and 3500 Performance certified is for installation type D: Ducted inlet, Ducted outlet. Performance ratings do not include the effects of appurtenances (accessories).



OPTIONS/ACCESSORIES

Roof Cap and Wall Cap

- Weather resistant duct termination.

Inline Adapter Kit

- Converts FF units into inline units.
- Available for FF100 through FF1500

Radiation Damper

- UL rated for use in 1, 2, or 3 hour rated floor-ceiling, roof-ceiling design.
- Mounts directly to the fan, screws provided.
- Galvanized steel frame.
- High temperature, non-asbestos, reinforced fiber thermal fabric.
- 212°F fusible link.
- Stainless steel negator-type closure spring.
- Available for FF100 through FF1500.

Metal Grille Kit

- White enamel painted steel.
- Mounting screws included.

Duct Transition

- Allows for quick transition to round ducting.
- Galvanized steel construction.

Vibration Dampening Hangers

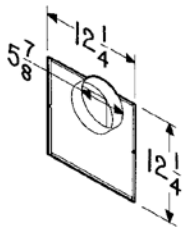
- Rubber in shear.
- Heavy-gauge steel construction with neoprene vibration dampening cushion.
- For use with 3/8" threaded rod (by others).

Damper Kit (for FFC 2000 and FFC 3500)

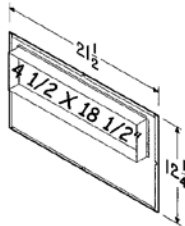
- Twin damper flaps and mounting hardware.
- Foam cushion and magnetic catch assure quiet backdraft prevention.



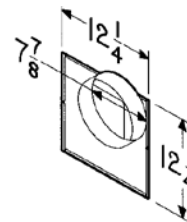
OPTIONS/ACCESSORIES (cont.)



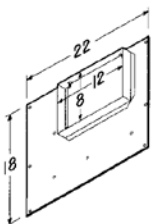
961L In-Line Adaptor Kit
 • Galvanized steel
 • Fits FF100 & FF150
 • For 6" round duct intake



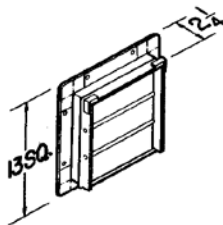
982L In-Line Adaptor Kit
 • Galvanized steel
 • Fits FF400, FF500 & FF700
 • 4 1/2 x 18 1/2" duct intake



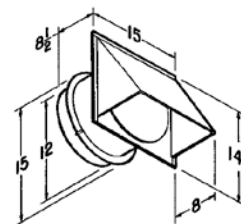
981L In-Line Adaptor Kit
 • Galvanized steel
 • Fits FF200, FF250 & FF300
 • For 8" round duct intake



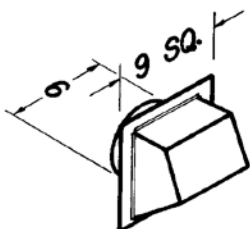
983 In-Line Adaptor Kit
 • Galvanized steel
 • Fits FF900 & FF1500
 • 8" x 12" round duct intake



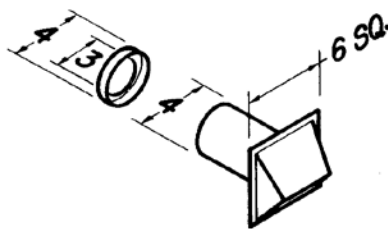
Model 441 Wall Cap
 • Gravity dampers
 • Collar with birdscreen for attaching 10" round duct
 • Steel construction with aluminum louvers



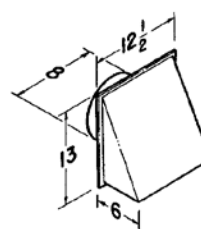
Model 613 Wall Cap
 • High Capacity
 • Built-in backdraft damper & birdscreen
 • Aluminum natural finish
 • For 12" round duct



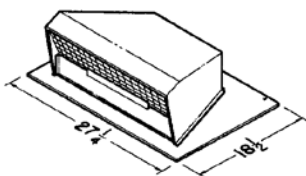
Model 641 Wall Cap
 • Aluminum natural finish
 • Built-in backdraft damper & birdscreen
 • For 6" round duct



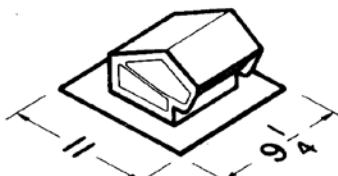
Model 642 Wall Cap
 • Aluminum natural finish
 • Built-in backdraft damper & birdscreen
 • For 3" or 4" round duct
 (4" to 3" transition included)



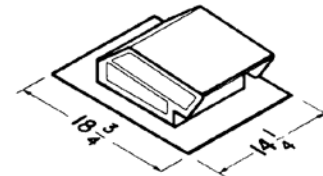
Model 643 Wall Cap
 • Aluminum natural finish
 • Built-in backdraft damper
 • For 8" round duct



Model 437 Roof Cap
 • High capacity design - up to 1200 CFM
 • Built-in birdscreen
 • Steel, black electrically - bonded epoxy finish



Model 636 Roof Cap
 • Black electrically - bonded epoxy finish
 • Built-in backdraft damper & birdscreen
 • For 3" or 4" round duct



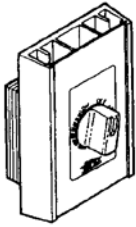
Model 634 Roof Cap
 • Black electrically - bonded epoxy finish
 • Built-in backdraft damper & birdscreen
 • For 3 1/4" x 10" or up to 8" round duct

Model 636AL - Aluminum

Model 644 - Aluminum

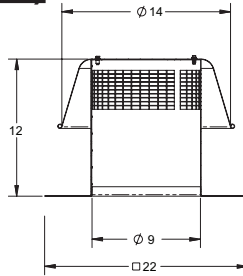


OPTIONS/ACCESSORIES (cont.)



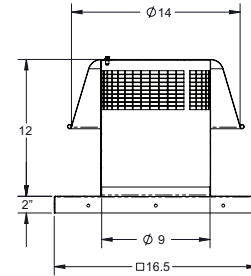
Speed Control

- Adjust speed from 100 to 50%
- 5 amp & 10 amp - 120V
- 6 amp - 240V
- 6 amp - 277V



Model RCXIISF08 Flat Roof Cap

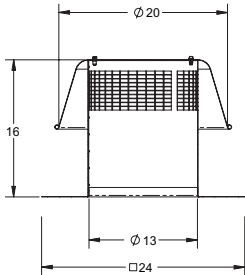
- For flat roof installation
- Spun Aluminum - natural finish
- Built-in birdscreen
- For up to 8" round duct



Model RCXII08

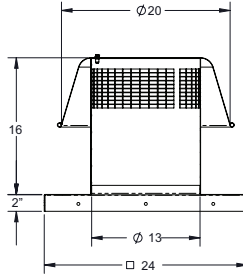
Curb Mount Roof Cap

- For curb mount installation
- Use 14-3/4" x 14-3/4" x 8" high curb
- Spun Aluminum - natural finish
- Built-in birdscreen
- For up to 8" round duct



Model RCXIISF12 Flat Roof Cap

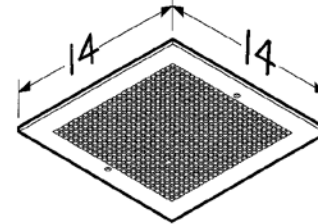
- For flat roof installation
- Spun Aluminum - natural finish
- Built-in birdscreen
- For up to 12" round duct



Model RCXII12

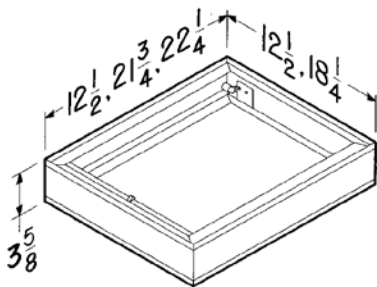
Curb Mount Roof Cap

- For curb mount installation
- Use 22-1/4" x 22-1/4" x 8" high curb.
- Spun Aluminum - natural finish
- Built-in birdscreen
- For up to 12" round duct



Model MG 1 Metal Grille Kit

- White enamel painted steel
- Mounting screws included
- Fits FF100, FF150, FF200, FF250 & FF300

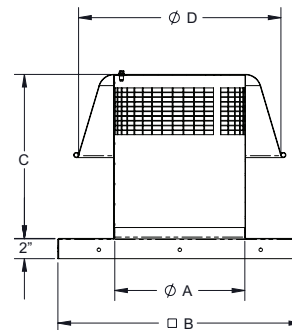
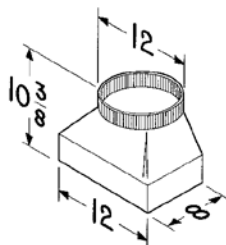
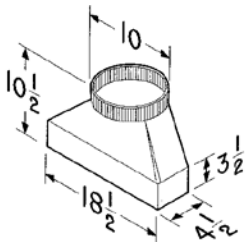


Models RD1, RD2 & RD3 Radiation Dampers

- UL rated for use in 1, 2 or 3 hour rated floor-ceiling, roof-ceiling design
- Galvanized steel frame
- High temperature, non-asbestos, reinforced fiber thermal fabric
- 212°F fusible link
- Stainless steel negator-type closure spring
- RD1 (12 1/4" x 12 1/4") fits FF100 - FF300
- RD2 (21 1/2" x 18") fits FF400 - FF700
- RD3 (22" x 18") fits FF900 - FF1500

Models 423 & T81212 Duct Transitions

- Galvanized steel
- Allows for quick transition to easy-to-obtain-and-install round ducting
- 423 (4 1/2" x 18" to 10 round) for use with FF400 thru FF700
- T81212 (8" x 12" to 12" round) for use with FF900 and FF1500



Model RCXII - 18" and 20" units

Size	A	B	C	D
18	19	29.5	22	27
20	21	29.5	22	30



OPTIONAL ACCESSORY COMPATIBILITY CHART

VARIABLE SPEED CONTROLS	CEILING MOUNT MODEL FF							IN-LINE/CABINET MODEL FFC						
	FF50 FF80	FF100 FF150	FF200 FF250 FF300	FF400 FF500	FF700	FF900	FF1500	FFC100 FFC150	FFC200 FFC250 FFC300	FFC400 FFC500 FFC700	FFC900	FFC1500	FFC2000	FFC3500
2727.1 (5 AMP 120V)	X	X	X	X			X	X						
2828.1 (10AMP 120V)		X	X	X	X	X	X	X	X	X	X	X	X	
80L in-unit speed control (3 amp 120 Volt) Ships separately for field mounting		X	X	X	X	X		X	X	X	X			
75V (240V)		X	X	X	X	X								X
277V (277V)		X	X	X	X	X	X							
ROOF CAPS														
437				X	X					X				
RCXII08, RCXIISF08	X	X	X					X	X					
RCXII12, RCXIISF12				X	X	X	X			X	X	X	X	
634M		X						X						
634,644		X	X					X	X					
636, 636AL	X													
RCXII18													X	
RCXII20														X
WALL CAPS														
441				X	X					X				
613						X	X				X	X		
641		X						X						
642	X													
643			X						X					
IN-LINE ADAPTERS														
961L		X												
981L			X											
982L				X	X									
983L						X	X							
UL RADIATION DAMPERS														
RD1		X	X											
RD2				X	X									
RD3						X	X							
METAL Grille KIT														
G102													X	
G103														X
MG1		X	X											
DUCT TRANSITIONS														
423				X	X					X				
T81212						X	X				X	X		
DAMPER KITS														
D100													X	
D101														X
VIBRATION DAMPENING HANGERS (4)														
V102	X	X	X	X	X	X	X	X	X	X	X	X	X	X
V104		X	X	X	X	X	X	X	X	X	X	X	X	X



MODEL PC

CEILING MOUNT BATHROOM FAN



Features & Construction

- Extremely quiet operation <0.3 to 1.1 Sones
- 80-150 CFM
- Aerodynamically engineered to move air with lowest power consumption and sound levels
- Motors operate with the lowest heat build up for long life even when run continuously - 5 year warranty
- PC50 features 4" duct connectors
- PC80X & 110X feature both 4 and 6" duct connectors
- PC150 features 6" duct connectors
- Low air leakage dampers minimize uncontrolled infiltration
- Robust steel housing
- Internal electrical wiring box
- Attractive, sturdy grille
- Thermally protected motor
- ETL Listed
- HVI Certified
- PC80X, 110X & 150 are ENERGY STAR® qualified

Performance

Model	Duct Size	CFM	Static Pressure (in W.G.)	Energy Efficiency (CFM/Watts)*	Watts	Power (V/Hz)	Sones	Amps	ENERGY STAR
PC50	4"	50/31	0.1/0.25	3.1	16	120/60	0.6	.13	No
PC80X	4"	80/58	0.1/0.25	3.0	32	120/60	0.4	.27	Yes
	6"	80/63					<0.3		
PC110X	4"	96/70	0.1/0.25	3.2	36	120/60	1.1	.30	Yes
	6"	110/87					0.6		
PC150	6"	150/110	0.1/0.25	3.8	41	120/60	1.1	.34	Yes

* Energy Star qualified data based on tested air flow and power consumption.



Dimensions

Model	Duct Dia.	Grille Size (Sq. in inches)	Cabinet Size (in Inches)			Unit Wgt. (lbs)
			W	D	H	
PC50	4"	10-1/4 x 10-1/2	9	9	5-3/4	6
PC80X	4 & 6"	13 x 14	11-3/8	10-1/2	7-5/8	8
PC110X	4 & 6"	13 x 14	11-3/8	10-1/2	7-5/8	9
PC150	6"	13 x 14	11-3/8	10-1/2	7-5/8	9

PC Options Overview

The simplicity of S&P's Premium CHOICE Series comes in the options. While other premium bath fans come as lighted fans, speed control, motion sensor or humidity sensor built in, our Premium Choice bath fans give you the flexibility to choose your grille and control separately. Our fans even allow you to change your mind after you install them!

Use the chart below to determine the options available with each Premium Choice Fan:

Option	Premium Choice Fan			
	PC50	PC80X	PC110X	PC150
	With Standard Grille			
Intermittent High Speed	✓	✓	✓	✓
Continuous 62.2 Speed Only	✓	✓	✓	✓
Continuous 62.2 Speed, Intermittent High Speed	✓	✓	✓	✓
Intermittent Reduced Speed	✓	✓	✓	✓
Humidity Sensing Only	✓	✓	✓	✓
Humidity Sensing and Intermittent High Speed	✓	✓	✓	✓
Contractor Pack		✓	✓	
	With Optional Lighted Grille Kit			
Intermittent High Speed		✓	✓	✓
Continuous 62.2 Speed Only		✓	✓	✓
Continuous 62.2 Speed, Intermittent High Speed		✓	✓	✓
Intermittent Reduced Speed		✓	✓	✓
Humidity Sensing Only		✓	✓	✓
Humidity Sensing and Intermittent High Speed		✓	✓	✓

PCLK - Premium CHOICE Series Light Kits

Grille Light Kits

S&P offers Premium Choice Series Light Kits so you can choose a fan with lights now or later. This kit fits the PC80X, 110X, 150 and PCD110H. The lighted grilles come standard with a 13 watt GU24 flourescent bulb and a 4 watt night light.



PCMK - Premium CHOICE Series Motion Kits

Motion Sensing Grille Kits

S&P offers Premium Choice Series Motion Sensing Kits so you can have worry free bathroom ventilation. This kit fits the PC80X, 110X & 150. The motion sensing grille includes a motion sensor, a speed control and a LED night light.





PC CONTROLS

Humidity Sensor (PCHS)

Using a PC fan with S&P's humidity sensing control is a worry free solution to fighting excess humidity and possible mold problems. The sensor easily mounts inside the fan housing utilizing 2 pre-drilled holes and a standard receptacle. With the sensor at ceiling level it detects rapid increases in moisture where steam and humidity naturally rise, and automatically turns on the fan. The humidity sensor features an automatic shut off to save worry and money. The humidity sensor is the perfect solution to "fit & forget" the bath fan, especially in high traffic bathrooms, kids' bathrooms, or households on-the-go that must leave the house without properly venting humidity. S&P's PC fan with optional Humidity Sensor helps prevent cosmetic and possible mold issues associated with excess moisture.

- Detects rapid rise in humidity
- Simple plug into receptacle in fan housing
- Auto-shut off timer
- Accessible sensitivity adjustment
- Humidity is sensed at the ceiling
- Can be installed with new fan or as an add-on later if needed

Speed Control (PCSC)

Using a PC fan with S&P's speed control is simple solution to for intermittent and continuous ventilation. The sensor easily mounts inside the fan housing utilizing 2 pre-drilled holes and a standard receptacle.

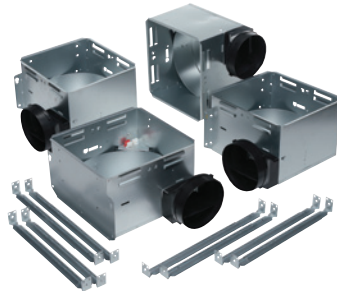
- Simple plug into receptacle in fan housing
- Accessible speed adjustment
- Can be installed with new fan or as an add-on later if needed
- Allows for adjustable continuous speed for ASHRAE 62.2
- High speed override



PC CONTRACTOR PACKS

For simple installation, PC80X and PC110X are available as 4 packs with the fan housings ready for installation first, then after the drywall and painting are complete the motor and grilles are available to finish the job. The housing kit includes the housing and hanger bars, while the finish kit includes the motor plate, motor, wheel and grille.

Contractor packs can be ordered with the PCLK Lighted Kits to make a lighted fan pack or PCMK Motion Sensing Kits to make a motion sensing fan pack (order 4 grille packs with the Motor & Grille pack).



Housing Pack



Motor & Grille Pack

Pack Part #	Description
PCH	PC80X & PC110X Contractor Pack Housings (4 pk)
PC80F	PC80X Contractor Pack Motor and Grille (4 pack)
PC110F	PC110X Contractor Pack Motor and Grille (4 pk)

ADDITIONAL PC ACCESSORIES

3-Switch Controls (PC3S)

The PC3S allows you to control three (3) features of a PC fan with one switch. Designed for PC fans with Grille Option and Plug & Play Control.



Additional Accessory CHOICES

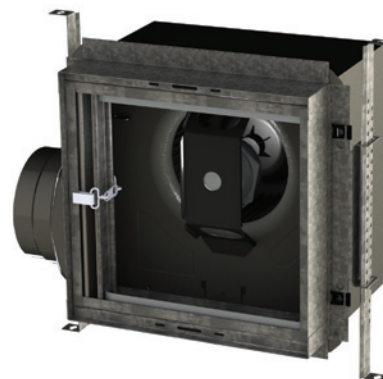
4" duct collar: PCDC4

6" duct collar: PCDC6

Metal Grille: PCMG

Radiation Damper (PCRD)

- 3-hour rating ceiling radiation dampers
- UL Listed Link (165°F Standard)
- UL Approved flexible fire blanket
- Ceramic fiber with fiberglass cover
- Roll-formed frame 22 g. galvanized steel





MODELS PCD110M & PCD110H

CEILING MOUNT BATHROOM FANS WITH DC MOTOR

Features and Construction

- Extremely quiet operation 0.5 Sones
- Brushless DC Motor for long life - rated for 60,000 hours continuous on
- PCD110M has a built-in motion sensor and LED night light
- PCD110H has a built-in humidity sensor
- High/Low speed delay timer
- Built-in backdraft damper
- Robust steel housing
- Attractive, sturdy grille
- ETL Listed
- ENERGY STAR® qualified
- HVI Certified
- 6 year warranty on DC Motor, 5 year warranty on balance of unit



Performance and Dimensions

PCD110M & PCD110H					
CFM @ 0.1" SP	4" Duct	80	90	110	120
	6" Duct	90	110	120	140
CFM @ 0.25" SP	4" Duct	50	63	77	87
	6" Duct	64	77	89	100
Sones @ 0.1" SP	4" Duct	0.7	0.7	1.0	1.2
	6" Duct	0.3	0.5	0.8	1.1
Watts @ 0.1" SP	4" Duct	5.5	7	11.5	13
	6" Duct	5.5	10	11.5	14.5
Energy Efficiency (CFM/Watt)	4" Duct	14.5	12.9	9.6	9.2
	6" Duct	16.4	11	10.4	9.7
Amps		.16	.18	.22	.23
ENERGY STAR Qualified	Yes				
Duct Connector Diameter (in)	4" or 6"				
Grille Size (in)	13" x 14"				
Dimensions (w x d x h) (in)	11-3/8" x 10-1/2" x 7-5/8"				

You CHOOSE Your Airflow!

The built-in **Toggle Switches** and duct connector options allow you to set the PCD110M & PCD110H to the needed airflow.

Switch position								
Airflow (CFM)	80	90	110	120	90	110	120	140
Duct diameter (inches)	4"	4"	4"	4"	6"	6"	6"	6"

1 & 2: Airflow • 3: Duct size
Factory setting is 110 CFM with 6" duct

Integrated Controls





COMPETITOR CROSS REFERENCE

S&P	Description		Coolair	Cook	Twin City	Penn	Acme	Carnes	Green-heck	Fantech	Canarm/Delhi
DB	R/T Down Blast Exhaust Centrif.	BD	CRBCA	ACEB	BCDR	DXB/KB/ JB/MB	PV/PNN	VEBK	GB	BDD/ABE	BDCR/ CBR
LPD & RED	R/T Down Blast Exhaust Centrif.	DD	CRDA	ACED	DCRD	DX	PRN	VEDK	G	REC/ DDD	DR- H/300/ CDR
TXB	R/T Up Blast Exhaust Centrif.	BD	UBCA	ACRUB	BCRU	FXB/FMX	PNU/PU	VUBK	CUBE	BDU	CDU / CBU
TXB UL762	R/T Up Blast Exhaust Centrif.	BD	CUBA	VCR	BCRUR	FXBFT/ FMBFT	PNU-RG	VRBK	CUBE	BDU	BDU/ CBUHP
TXD	R/T Up Blast Exhaust Centrif.	DD	UDCA	ACRUD	DCRU/ R	FX/FMX	PDU	VUDK	CUE	DDU	DU-H / CDU
CWD	Sidewall Exhaust Centrif.	DD	CWDA	ACWD	TCWX	WX/WA/ WB	PW	VWVK	GW	--	--
FF/FFC	Ceiling Cabinet fans	DD	CF/CFL	GC-GN	T/TL	ZEPHER- Z	V/VQ/VQL	VCDD	SP/CSP	CEV/ IEV	--
KSF	R/T Filtered fresh air supply fan	DD	CFS/SIS	KSPB	BCFS	MU/FS	AFSI	VSBB	KSU/RSF	FSU	SIS / SBAR
ARE / ARS	R/T Dome Exhaust/Supply Axial.	DD	SASD/ SAED	AQD	--	DAE	LQ	LEDA	AIS	ADE /ADS	--
S	Direct drive shutter fan	DD	CDP/WS	--	--	P	--	--	--	SHE	SD/ AX/ S
GED / GSD	Sidewall Exhaust/Supply Prop.	DD	CDC	APD	TCPE	P	FQ/FN	LTDK/ LZDK	SE1/SS1	VLD	P
LCE / LCS	Sidewall Exhaust/Supply Prop.	BD	CAB/CBL	XLN/SWB	WPMD	BLL/BFM/ BBK	DC/DCK	LWBA/ LWBK	SBE/S 1&2	SDE	DDS / ADD
L2E / L2S	HD Sidewall Exhaust/Supply Prop.	BD	CAL	XL/XM/ AWB/ HWB	TCWPX *	BFM/BFH/ BCH	DCK/DCH	LABA	SBE/SBC	MDE	XB / HV
SQB	Square Inline Duct Fan Centrif.	BD	SQBA	SQNB -B/ SQI-B	BSI	SXB	XB	VIBK	BSQ	--	DSQ-B
SQD	Square Inline Duct Fan Centrif.	DD	SQDA	SQND -D/ SQI-D	DSI	SX	XD	VIDK	SQ	FSD	DSQ-D
UBS	R/T Upblast Exhaust Propeller	DB	J/JT	LXU/LEU/ LSU	LPRVX	HS/HZ	UBG	LUBA	PUB/RBU	BLT	RB
HREB-C	R/T Hooded Exhaust Propeller	BD	PEB	HXE/HEE	LPHD/B	AF/AC	EC/ECH	LTBA	RBE/ RBCE	RHE	PRE
UBSRD-HT	R/T Upblast Exh. H. Temp Prop.	BD	HS	SUBH	UBT/TUB	HX	UBH-UF	LQBA	TAUB-HT	--	RTA
HRSB	R/T Hooded Supply Propeller	BD	PSB	HXS/HES	HVWP	AF/AC	EC-S/ ECH-S	LGBA	RBS/ RBCE	RHS	PRI
TDB / DDT	Tube Axial fans	BD/DD	TBC/ TEBC	EDB/EDD	TB/TD	BTA/TA	HA / HDD	LIBA/LIDA	TAB/ TAD		BTA/DDA
CM	Vent Sets/ BI / cUL705 & 762 & 793	BD	VSBC	CPV/S	BCV/J	D/RPK	QBR	--	SWB	--	BI/BI-RM
RCXII	Non-powered Roof Vent - Rnd Dome		ARVE	PR	GRV	DR	LQV	GSAA	GRS	--	--
CSF	R/T Centrifugal Filtered Supply	BD	CFS	ASP	FSR	MU	--	VHBB/ VSBB	RSF	--	700
CVTT	Forward curve air handler 7' to 30"	BD	--	--	DBS	--	--	VGBA		--	9200
CFD	Forward curve air handler 7' to 15"	DD/BD	--	DB	DBS	ZC	--	VDBA		--	200
CBS	Single inlet blower	BD	--	--	DBS	--	--	--		--	400
CBM	Direct drive dual inlet blower	DD	--	--	--	--	--	--		BLR	GDD
CBP	Belt drive dual inlet blower	BD	--	--	TFC	--	--	--		--	G
CBP-RC	Belt drive dual inlet Framed blower	BD	--	--	VFC	--	--	--		--	800
CBP-RE	Belt drive dual inlet framed HD blower		--	--	TFC-2	--	--	--		--	900
FCB	Belt drive Forward curve vent set		--	--	FCV	--	--	VFB	SFB	--	600
TD	2 speed inline mixed flow fan	DD	--	--	--	--	--	--		--	-
PV	Backward incline inline fan	DD	--	--	--	--	--	--		FG	-
SWF	Outside wall mount exhaust	DD	--	--	--	--	--	--		RVF	-
PW	Radial blade pressure blower	DD	--	--	--	--	--	--	FPB	--	PW
KE	Radial blade pressure blower	DD	--	CPFD	JRW	--	--	--	IPA	--	KE
D	Forward curve direct drive blower	DD	--	--	DDF	--	--	--	SFD		D

R/T = Roof Top, BD = Belt Drive , DD = Direct Drive



Canada, Inc.

5600 Ambler Drive
Mississauga, ON L4W 2K9
p: 866.733.0233
f: 866.358.5346
www.solerpalaucanada.com

